

SAMSUNG

Samsung Electronics America, Inc.
400 Valley Road, Suite 201 Mount Arlington, NJ 07856
1-800-SAMSUNG (1-800-726-7864)
www.samsung.com

AH68-01662L (Rev 0.0)

YH-820

SAMSUNG



- Mass Storage Device Support
- MP3 & WMA Playback
- Image File Viewer
- Direct MP3 Recording
- USB 2.0 High Speed Data Transfer
- SRS WOW Surround Sound
- 1.5-inch 65,000 color LCD
- Upgradable
- Built-in Rechargeable Li-Ion Battery

YH-820

Contents

I Preparations

Safety Instructions	4
Battery Charger Safety	6
Charging the battery	7
Features	8
Components	10
Display	10
Location of Controls	11

I Connection to Computer

Connecting the player to your PC	12
Manual Installation of the USB Driver	16
Disconnecting the USB cable	18
Formatting in PC	19
Using Recovery Utilities.....	20
Using the Mass Storage Device	21
Installing the Napster software	22
Registering for a Napster Account.....	23
Using Napster	24
● Searching for and Purchasing Music	24
● Importing Your Existing Music	26
● Transferring Music to your Player	29
● Deleting Music on Your Player	32
● Getting Help with Napster	33
Installing Multimedia Studio	34
Using Multimedia Studio	36
To View Help on Multimedia Studio	43

I Using Your Player

Playing music	44
Hold Feature / Loop Repeating	45
Searching Within Music Files	46
Menu Mode	47

Contents

I Using Your Player

Browsing Your Music.....	48
● Searching for and Selecting Music Files	48
● Play Options(Artist, Album, Tracks, Genres)	50
● Selecting a Playlist	51
● Play Options(Playlist)	51
● Searching for and Selecting Voice Files	52
● Play Options(Voice Recordings).....	52
Recording Voice	53
Recording MP3s	54
Viewing Image Files.....	55
Viewing Slide Show	56

I Additional Features

Shuffle and Repeat Playback	57
Equalizer Settings	58
SRS Settings	59
Recording Settings	60
Backlight Setting	60
Contrast Setting	61
Power Save Screen Setting.....	61
Fader Effect.....	62
Power Off Settings.....	63
Restoring Default Settings.....	64
Player Information	64










I Customer Support

Troubleshooting.....	65
Specifications	67

Safety Instructions

Safety Instructions

Please read and understand all the instructions to avoid injury to yourself and damage to the device

<p>Do not expose to extreme temperatures (above 95°F or below 23°F). Do not expose to moisture.</p> 	<p>Do not apply excessive pressure to the device. Do not drop the player.</p> 	<p>Do not let any foreign matter spill into the device.</p> 
<p>Do not expose to chemicals such as benzene and thinners.</p> 	<p>Do not use the unit near any appliance that generates a strong magnetic field.</p> 	<p>Do not expose to direct sunlight or heat sources.</p> 
<p>Do not try to disassemble and repair the device yourself.</p> 	<p>Do not store in dusty areas.</p> 	<p>Do not place heavy objects on top of the device.</p> 

* Please be aware that we disclaim all responsibility for damages from loss of saved or recorded data due to breakdown, repair or other causes.

Earphones

Follow Traffic Safety Instructions

- Do not use the earphones while driving an automobile or riding a bicycle. It's not only dangerous, but also against the law.
- To avoid an accident, do not turn up the volume of the earphones too high while walking.

Protect your ears

- Do not turn up the volume too high. Doctors warn against prolonged exposure to high volume.
- Stop using the device or turn the volume down if you have ringing in your ears.

Ambient operating conditions

- Ambient temperature : 5°C ~ 35°C (41°F ~ 95°F)
- Humidity : 10 ~ 75%

Environmental Information

- Follow local guidelines for waste disposal when discarding packages, batteries, and old electronic appliances.
- Your player is packaged with cardboard, polyethylene etc., and do not use any unnecessary materials.

Battery Charger Safety



CAUTION

RISK OF ELECTRIC SHOCK. DO NOT OPEN



The uninsulated parts inside the charger could cause electric shock.
For your safety, do not open the case of the charger.



Read this User Manual to prevent any problems that may occur while using the charger.

Warning

- Use the charger away from water sources to avoid fire or electric shock.

Caution

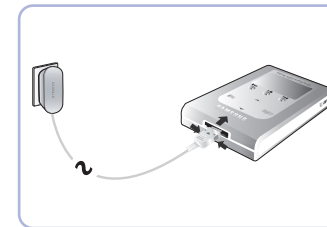
- To avoid electric shock, use the charger only with a 120V power outlet.
- Make sure that the charger's plug is inserted all the way into the outlet.

Charging the Battery

A charger is supplied with your player.

Plug the charger into a wall outlet.

- * The indicator light on the USB cable turns green once charging is complete.
- * The first time the battery is charged, it will take approximately 3 hours.
Battery recharge time in normal operation is approximately 2.5 hours.



ENG

Caution

- To avoid the risk of fire, do not charge longer than 12 hours.
- Do not plug several devices into the same outlet.
- Do not use a rechargeable battery or charger that is defective.
- When using the rechargeable battery for the first time or after several months of non-use, fully charge it first.
- Overcharging will reduce the battery life.
- The rechargeable battery is a consumable item and its capacity will decrease gradually.
- To prolong the life of your battery, use the fully charged battery until it is completely discharged, and then fully charge it again before use. If you charge the battery that is not completely drained, the battery operating time will decrease. In this case, fully cycle (fully charge and then fully discharge) the battery several times.
- Do not let metallic objects, such as necklaces or coins, come into contact with the terminals (metallic parts) of the charger and the built-in rechargeable battery.
A fire or electric shock may result.
- Do not touch the charger with wet hands.

Mass Storage Device Support

- You can use the built-in 5GB hard drive to store your entire music library, plus use it as an external drive for your PC to store other data files.

MP3 & WMA Playback

- Your player supports playback of both MP3 and WMA.

Image File Viewer

- You can view JPEG images. Image files edited with Multimedia Studio can be viewed as slide shows.

Direct MP3 Recording

- You can convert music from CDs, cassettes, and radio into MP3 files without a PC.

USB 2.0 High Speed Data Transfer

- Maximum data speed transfer of 50 Mbps

SRS WOW Surround Sound

- The 3D surround(SRS) feature adds spaciousness to the sound.

1.5-inch 65,000 Color LCD

- The 1.5-inch 65,000 color LCD supports viewing of high quality image files.

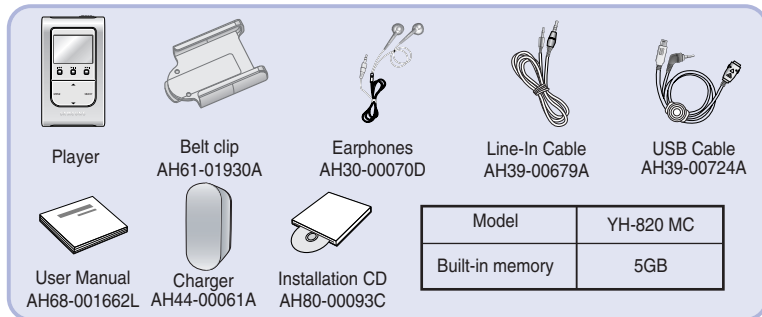
Upgradable

- You can upgrade the built-in programs when available.
Please check the home page (www.samsung.com) for upgrades.

Built-in Rechargeable Li-ion Battery

- The built-in rechargeable lithium battery provides up to 8.5 hours of play time.
Time may vary depending on usage pattern.

Components

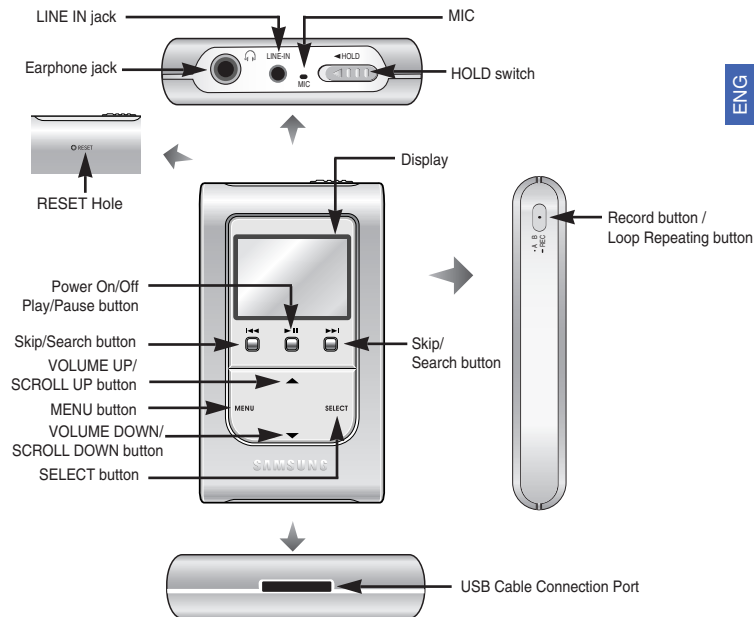


- The capacity of the useable built-in memory is less than indicated as the internal firmware uses a part of the memory as well.
- The appearance of the accessories shown is subject to change for product improvement without prior notice.
- The performance speed may slow if the internal memory does not have any free space.

Display



Location of Controls



ENG

Connecting the player to your PC

Connecting the player to your PC

System Requirements.

- Windows XP
- Windows Media Player 10.0
- Internet Explorer 6.0 or higher
- Pentium 200MHz or greater
- 50MB of available hard disk space
- CD-ROM drive (double speed or greater)
- USB port (2.0) supported
- DirectX 8.0 or above.



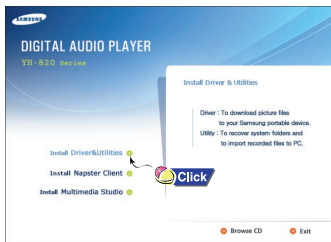
Note

- Log into your PC as an administrator (Main User) and install the supplied software (Napster/Multimedia Studio) Otherwise, installation will not be completed.

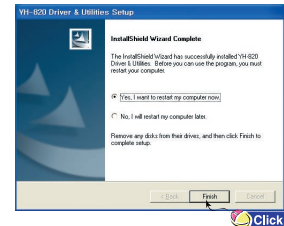
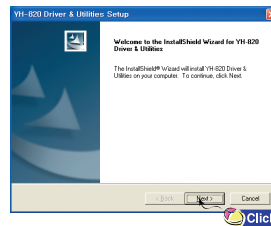
Before connecting the player to PC, make sure to install **Driver&Utilities**. If “Add New Hardware Wizard” appears, press the **[Cancel]** button and install Driver&Utilities.

Installing software

- 1 Insert the Installation CD into CD-ROM drive. The picture shown below appears. Select **[Install Driver&Utilities]**.



- 2 Follow the instructions in the window to complete the installation.

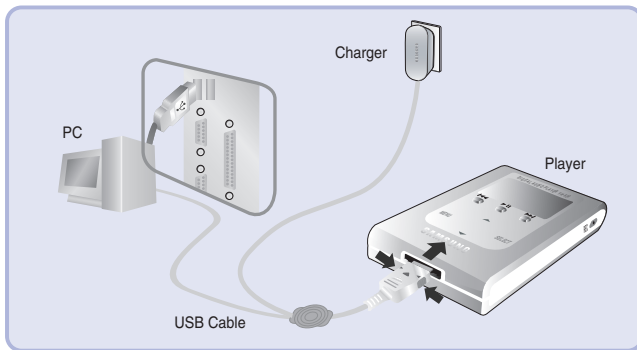


Continued...

Connecting the player to your PC

Connecting the player to your PC with a USB cable

- 3 Connect the USB cable to the USB port your computer.
- 4 Connect the USB cable to the USB cable connection port on the player, and then plug the charger to the power outlet.
 - If you disconnect the USB cable from your PC while implementing a command or initializing during USB driver installation, your PC may not function correctly.
- 5 The USB driver is installed with a message saying that it is searching for a new device. You may not see the display screen during installation. Go to the device manager to check that installation has been successfully completed.
- 6 Upon installation of the USB driver "Samsung YH-820 USB Device" will appear in the [System Properties] → [Device Manager].

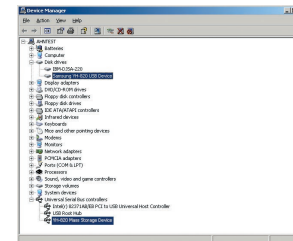


Connecting the player to your PC

How to check if USB driver is properly installed

Windows XP:

- 1) Start → Settings → Control Panel → System → Hardware → Device Manager → Disk Drives → Samsung YH-820 USB Device
- 2) Start → Settings → Control Panel → System → Hardware → Device Manager → Universal Serial Bus Controller → YH-820 Mass Storage Device



- 7 When USB driver is not installed automatically, refer to next page.

Manual Installation of the USB Driver

Go to "Transferring Music to Your Player"(p29) if the USB driver is installed.
Follow these steps if the USB driver is not installed :

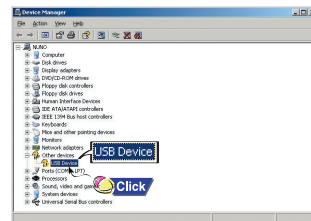
1 When an error occurs during installation of the USB driver

1 Check the device manager.

- Windows XP (Professional):
Start → Settings → Control Panel → System
→ Hardware → Device Manager

2 Check if there is a device listed with an exclamation point or a question mark (displayed as unknown device or USB device).

3 Double click on the device listed with an exclamation point or a question mark.



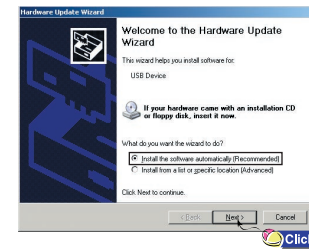
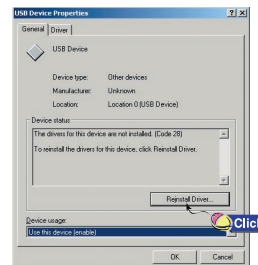
Notice

- The installation method may vary depending on the type of PC or operating system. Contact your PC dealer or service center for installation information.
- If errors occur continuously when you install the USB driver, reconnect the USB cable after rebooting your system.

Manual Installation of the USB Driver

4 After selecting the driver and click [Reinstall driver].

5 Select [Install the software automatically] and click [Next] to finish.



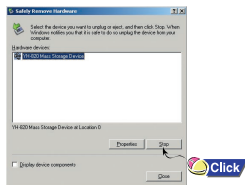
Disconnecting the USB cable

- After completing the file transmission, you must disconnect the cable in the following way:
- Please close Multimedia Studio.

1 Double-click on the green arrow in the taskbar on the bottom right of the window.

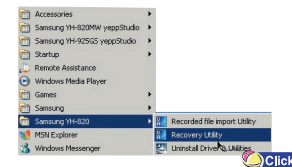


2 When the [Stop a Hardware device] message appears, press the [OK] button and disconnect the USB cable.

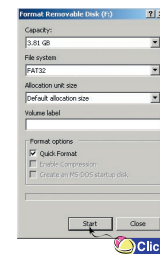


Formatting in PC

1 Select [Start] → [Programs] → [Samsung YH-820] in the desktop, and then press [Recovery Utility].



2 Press the [Format Device] button. When the format screen appears, select the file system as FAT32 and then press the [Start] button.



Note

- By formatting, all previously preset menus will be reset, and any pre-existing song or data files will be erased.
- Care must be taken as formatted files can not be recovered.

Using Recovery Utilities

The Recovery Utility can be used to recover your system in the event the following occurs:

- If one of the messages below appears:
 - Connect to PC and repair firmware with recovery utility.
 - Connect to PC and rebuild database with recovery utility.
- If the message "Loading" appears and the device does not operate when you turn on the power.
- If file search does not work properly in the Menu Library.

- 1 Connect the player to PC.
- 2 Select [Start] → [Programs] → [Samsung YH-820] in the desktop, and then press [Recovery Utility].
 - For more details on recovery, press [Help] to view the help.
- 3 Select the recovery method you want.
 - See help for details on each method.

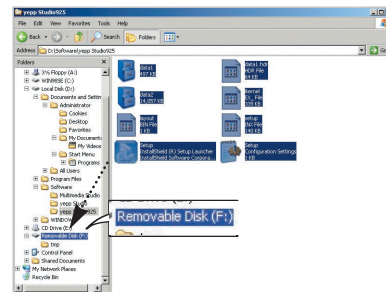


Using the Mass Storage Device

The Removable Disk can be used as Mass Storage. Video, audio and image files can be downloaded but cannot be played back.

Downloading files

- 1 Connect the player to PC.
- 2 Right click on the Start button, then choose Explore to Open Windows Explorer on PC.
 - [Removable Disk] is displayed in Windows Explorer.
- 3 Select the file to save and drag-and-drop it into the [Removable Disk]

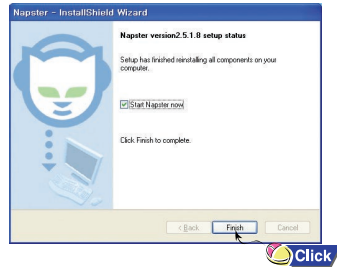
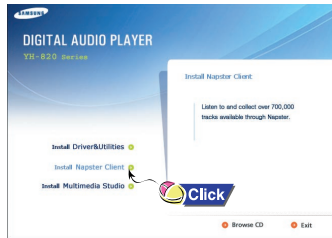


Installing the Napster Software

Before you install the Napster software, review the system requirements on page 12. If you don't already have Windows Media Player 9 or above, please go to <http://www.microsoft.com/downloads> and download it.

You will first need to install the Napster application:

- 1 Insert the installation CD that came with your player and follow the instructions to install Napster.
- 2 Follow the on-screen instructions as the InstallShield Wizard guides you through the installation. When the installation has completed, click **[Finish]**.



Registering for a Napster Account

- 1 After you have completed the installation, create a member name and password. Enter the required information and click **[next]**.
- 2 Napster is free to search, browse, and play music clips. If you want to become a member of the Napster subscription service, enter your credit card information and click on the **[submit]** button. Note that you do not have to enter a credit card to register.



Note

If you are already a Napster member, click on the **[I'm already registered]** button in the upper right corner and sign in.




- 3 Sign in to Napster. You can use Napster to copy your CDs to your PC and Samsung Napster player. You can search, browse, and play music clips in the Napster catalog. You can buy songs and albums individually, or you can subscribe for unlimited access to the entire catalog of Napster content.

Using Napster

Using Napster

Searching for and Purchasing Music

Copying Tracks From A Music CD

- 1 Insert the CD into the CD-Rom drive on your computer.
 - 2 Launch the Napster application by double-clicking the Napster icon on your desktop.
-  **Note**
If you do not have the Napster application, see page 22 for instructions on installing Napster.
- 3 Click the  [library] button to switch to the Library view, and select the  CD icon. By default, all tracks are checked. If you don't want to rip the entire CD, you can use the **select all/deselect all** buttons to change the selections.
 - 4 You can initiate ripping in one of two ways:
 - a. Select the CD icon in the library tree and select **Rip CD** from the right-click menu to rip the entire CD.
 - b. To rip some of the tracks, make sure the tracks you want are checked in the tracklist; then click the **Rip** button, or select **Rip Checked Tracks** from the right-click menu.

 **Note**

Tracks are saved in the directory you specified for your Napster music.

An optional MP3 encoder is available for download. You can access this encoder from the "Update Napster" page of the My Account menu.

If the MP3 encoder is installed the first time you rip a CD, you are prompted to set the options for file type and quality. The default is 128 kbps WMA. Once you click [OK], the ripping process begins. You can change your ripping options later from the File, Options menu.

Ripping is a process which encodes music from a CD into WMA or MP3 format.

Here are some things you should know about tracks purchased on Napster:

- Tracks purchased on Napster are yours to keep and can be burned to CD and seamlessly transferred to your player.
- You can keep copies of purchased tracks on up to three computers. To copy your purchased tracks to another computer, use the **[Sync/Restore]** feature on Napster available from the **[My Account]** menu.

 **Note**

If you try to transfer to your player tracks that have not yet been purchased, you will automatically be prompted to purchase the tracks.

Using Napster

To search for and purchase music on Napster:

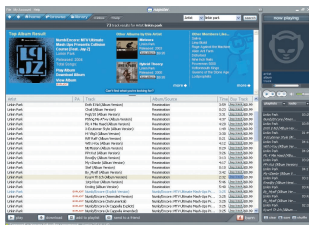
1 Launch the Napster application by double-clicking the Napster icon on your desktop.



Note

If you do not have the Napster application, see page 22 for instructions on installing Napster.

2 If there is a specific track you are looking for, simply type the artist, album, or track name in the search field in the upper right corner, select the search type from the drop-down menu, and click **[go]**. If you do not know specifically what you are looking for, you can go to the Browse tab to browse for music by genre.



3 Select the track(s) you would like to purchase.



Note

You can also purchase an entire album by clicking the provided [buy album] link or selecting a track on the album, right-clicking, and choosing [Buy Album].

4 Click the **[buy track]** button, or right-click and choose **[Buy Track(s)]**.

5 A confirmation page with your selected tracks is displayed. Click **[Next]**.

6 If it is your first track purchase and you are not a Premium service member, you will be prompted to enter your credit card information.

Once you purchase the track, the track is automatically downloaded to your Napster Library. Next, drag and drop the selected MP3 files to the YH-820. Purchased tracks can then be burned to CD and transferred to your player.

Using Napster

Importing Your Existing Music

You can use Napster to import existing WMA or MP3 files into your Napster library. Once these imported tracks are in your Napster Library, you can transfer them to your player.



Note

If you do not have the Napster subscription service and you attempt to import Napster tracks sent to you by other Napster members, you will be prompted to either purchase the tracks or sign up for the Napster subscription service.

Any other protected WMA files will require that you have the correct license for those tracks to import them into Napster.

If you purchase the tracks, you can burn them and transfer them to your Samsung Napster Player.

If you sign up for the Napster subscription service, the imported tracks are treated as regular Napster downloads.

To import WMAs or MP3s into your Napster Library:

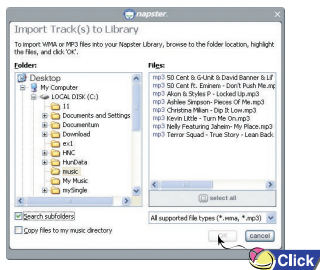
1 Select **[Import Track(s) to My Library]** from the **[File]** drop-down menu on the Napster application.

2 Browse to and select the directory where the tracks are located from the **[Folder]** window on the left.

3 Select the particular tracks from the **[Files]** window on the right. To select multiple tracks, hold down the **[Ctrl]** or **[Shift]** keys while selecting, or click **[select all]**.

Using Napster

4 Click the [OK] button.



- 5 A progress bar displays while the tracks are importing. When the tracks successfully imported, they will be stored and accessible from your Napster Library. You will also be prompted to edit the track data for any non-Napster tracks (see next section).

Using Napster

Transferring Music to Your Player

Tracks that you purchase through Napster can be transferred seamlessly to your player using the Napster application.

Note

Before transferring, make sure your player battery is charged or connected to AC power, otherwise your transfer may not complete successfully.

When you plug your device into your computer through the USB port, the Napster application will automatically recognize it and display it as Samsung YH-820 under the menu tree of your Napster Library. If your player is not connected or detected, it will display a "Portable Device" icon.

If your layer is not listed, check your connection and verify that the player is detected by your computer.

Note

If you try to transfer tracks to your player that you have not purchased yet, you will automatically be prompted to purchase the tracks.

Make sure your player battery is charged or connected to AC power.

Using Napster

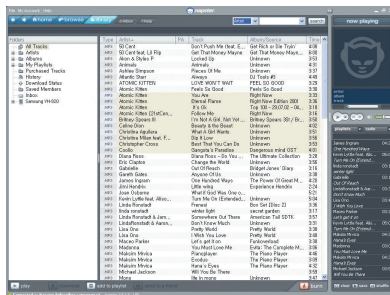
To transfer tracks from your Napster Library to your player:

1 Locate the track(s) that you want to transfer in your Library.



You can transfer tracks from other areas of Napster by right-clicking and selecting [Transfer Track(s) to Portable Device]

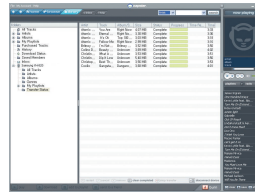
2 Click and hold the mouse on the track(s), then drag the tracks to the listed **Samsung YH-820** icon in the left window of your Napster Library (refer to the following figure).



If the tracks are Napster tracks that you have not already purchased, you will be prompted to purchase them.

Using Napster

3 The progress of the transfer displays under Transfer Status. To view transfer status, click on the + in front of **Samsung YH-820** under your Library to expand the sub-folders, and then click on [Transfer Status].



4 When the tracks have finished transferring, the status is listed as Complete.

Important Note

Do not disconnect the device while the transfer is in progress.

5 Never unplug the device without first safely disconnecting. To safely disconnect or eject your player, do the following:

Windows XP

Click the "Safely Remove Hardware" icon on your Windows taskbar and follow the instructions in the message box that appears.



Windows XP

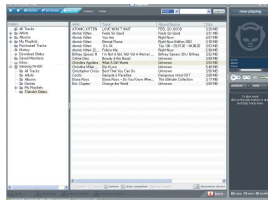
Using Napster

Using Napster


Deleting Music on Your Player

To remove track(s) from your player:

- 1 Verify that your player is connected to your computer and displayed in your Napster Library as **Samsung YH-820**.
- 2 Navigate to and locate the track(s) within the player menu tree by clicking on the + sign next to the YH820 icon.
- 3 Select the track(s) and click the **[remove]** button or press the **[Delete]** key on your keyboard.



Getting Help with Napster

Additional help for the Napster application is available by clicking on the  button from any screen, or through the Help drop-down menu.

The following help options are available:

- User Guide: Comprehensive online instructions for using all the Napster features and functions
- FAQs: Answers to frequently asked questions about Napster
- Customer Support: If you require additional assistance using the Napster Software or Napster Services, please contact Customer Support from the Help drop-down menu or send your inquiries to support@napster.com(U.S.).

ENG

Installing Multimedia Studio

- Multimedia Studio is a program that supports image editing, video playback and format conversion, and multimedia album creation.

- 1 Insert the installation CD into the CD-ROM drive.
Select [Install Multimedia Studio].



- 2 Select language



- 3 Follow the instructions in the window to complete the installation.

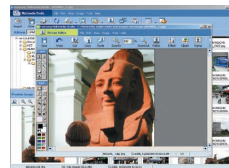
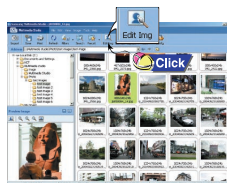
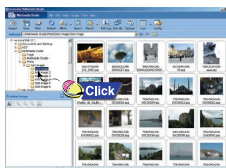


Using Multimedia Studio

- Run Multimedia Studio from on the Desktop.

Editing Images

- 1 Select the folder containing images to edit from the directory window at the upper left-hand section of Multimedia Studio.
 - The saved files will be displayed in the file list window on the right.
- 2 Select the image to edit.
 - The selected image will be displayed in the [Preview image] window.
- 3 Press the [Edit Img] button.
 - From the [Picture editor] window, you can perform functions like editing wallpaper images, editing layers, inserting clip arts, making frames and other various editing functions.



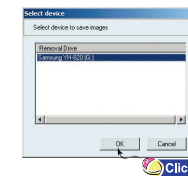
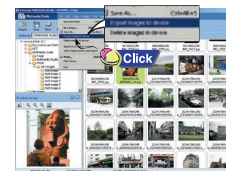
- Refer to Help for more information.

Using Multimedia Studio

- Files downloaded without using Multimedia Studio cannot be viewed on the screen.

Sending images

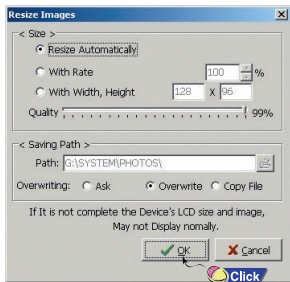
- 1 Connect the player to PC.
- 2 Select the image(s) to send to the player.
- 3 Select [File] → [Export images to device] at the top of the Multimedia Studio menu.
- 4 Select the device connected to PC from the [Select device] screen, and then press the [OK] button.



Using Multimedia Studio

5 Set the size and path of the image at the [Resize images] window and then click the [OK] button.

- The image will be sent to the selected device.
- The sent image can be viewed from [Photo] → [Albums] on the menu.
- The optimal image size for viewing on the unit is 128 x 96. Please adjust the image size if the image does not display correctly on the player.



Note

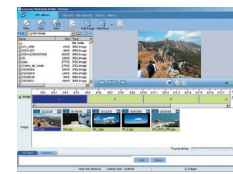
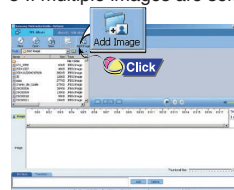
- Image files saved in the player can be deleted by selecting [File] → [Delete images in device].
- Refer to Help for more information.

Using Multimedia Studio

- Albums created from [Making Album for the use of PPL] can be viewed as slide shows on the player.

Making Albums for Slide Shows

- 1 Connect the player to PC.
- 2 Press the [Edit Alb] button at the top of Multimedia Studio.
 - The [Making New Album] window will be displayed.
- 3 Select [Making Album for the use of PPL] and then press the [OK] button.
 - The [PPL Album] window will be displayed.
- 4 Press the [Add Image] button at the top of the [PPL Album] window to select the image to edit.
 - If multiple images are selected, each image will be displayed for 5 seconds.



- 5 Press the [Add Music] button to add background music.
 - Add BG Music: Images change every 5 seconds while the selected music is played.

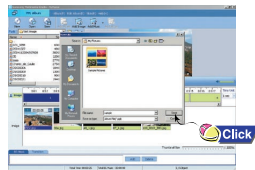


Using Multimedia Studio

6 Press the [Save] button at the top of the [PPL Album] window when album editing is complete.

7 Select the directory to save to in the save window and press the [Save] button.

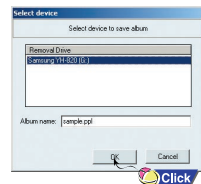
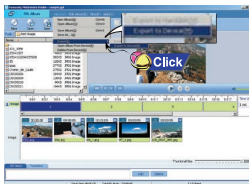
- The edited album will be saved in the selected directory.



8 Select [Album] → [Export] → [Export to Device] at the top of the [PPL Album] window to send the saved ppl file to the device.

9 Enter the album name at the [Select device] screen and then press the [OK] button.

- The ppl file will be sent to the selected device.
- The sent ppl file can be viewed from [Album] → [Slide Show].



Note

- Select [Delete from Device] to delete ppl file saved in the player.
- Refer to [Help] for more detailed information

Using Multimedia Studio

- This function allows you to capture a still frame from a video file and save it as a picture, then transfer it to your YH820.

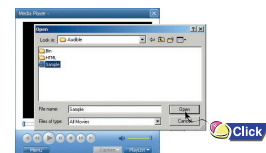
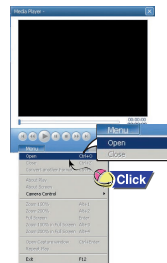
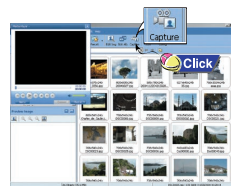
Capturing Video

1 Press the [Capture] button at the top of the Multimedia Studio menu.

- The Media Player screen will be displayed.

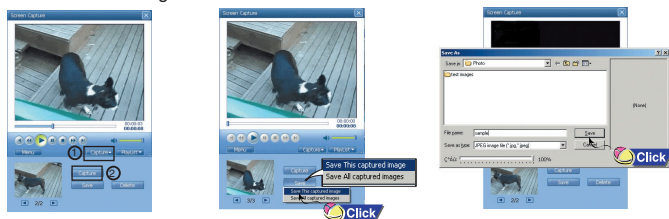
2 Click [Menu] → [Open] on your PC and select the video to play.

- The selected video will be played.



Using Multimedia Studio

- 3 Press the ① [Capture] button and then press the ② [Capture] button when the image you want to capture appears.
 - The selected image will be captured.
- 4 Press the [Save] button.
 - Save This captured image: saves the currently selected image.
 - Save All captured images: saves all captured images.
- 5 Select the directory to save to from the [Save As] window and press the [Save] button.
 - The selected image will be saved.



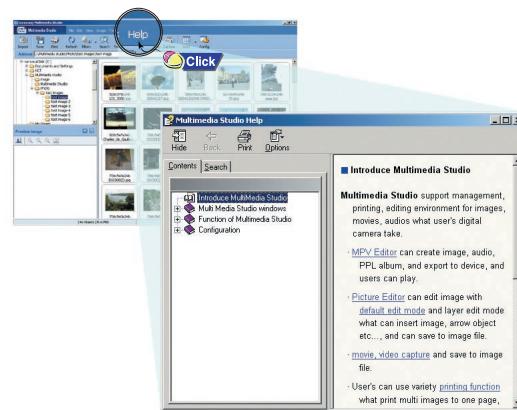
Note

- The player will only play back still images. It will not play back video.
- Video playback and conversion codecs are not provided. It is recommended that you use codecs of latest versions.
- Refer to [Help] for more detailed information

To View Help on Multimedia Studio

Run Multimedia Studio and press the Help button at the top of the screen.

- Help will be displayed.



Playing music

Make sure the player is fully charged and the earphones are connected.

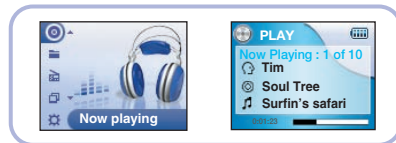
Turning Power On and Off

- **Power On:** Press and hold the **▶||** button to turn on the power.
- **Power Off:** Press and hold the **▶||** button to turn off the power.

Playing Music

Select Now Playing in the menu.

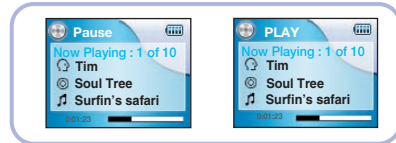
- Playback starts automatically.



Pausing Music

Press the **▶||** button to pause playback.

- While in Pause mode, briefly press **▶||** again to resume playback.



Note

- Press and hold the SELECT key in Now Playing during file playback to display the current Playlist.
- In the Playlist, use the SCROLL UP/SCROLL DOWN buttons to move to a track, and press the **▶||** button to play the selected track.

Adjusting the Volume


Press the VOLUME UP or DOWN button to adjust the volume from 0 to 40.



Hold Feature

Use the Hold feature to lock and disable all buttons. The Hold feature is useful to prevent your Samsung player from being accidentally turned off or on when jogging, or to ensure uninterrupted playback.

Activate  on the main unit.

- When you activate the HOLD switch, a  appears on the display.

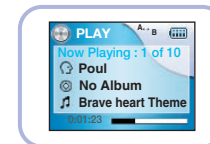
ENG

Loop Repeating

Starting Point

While playing a music file, press the A↔B button at the beginning of the loop you want to set.

- A ↔ appears in the display.



Ending Point

Press the A↔B button again to set the end of the loop.

- A ↔ B appears in the display.
The loop is played repeatedly.

Note

- Press the A ↔ B button to cancel the loop.

Searching Within Music Files

Menu Mode

Searching for Specific Parts in PLAY Mode

- During playback, press and hold the ◀◀, ▶▶ buttons to forward or reverse search the currently playing file.

Searching for Music Files in PLAY Mode.

- During playback, briefly press the ▶▶ button to play the next track in the playlist.
- Press the ◀◀ button within 5 seconds after playback starts to move to and play the previous track. Press the ◀◀ button after 5 seconds to play the current track from the beginning.

Searching for Music Files in PAUSE Mode.

- While in pause mode, press the ◀◀, ▶▶ buttons to move to the previous or next track in the playlist and play it automatically.

Note

- VBR (Variable Bit Rate) File: An MP3 file that has varying compression ratios.
- When playing a VBR file, even if you press the ◀◀ button within 5 seconds after the start of playback, the previous song may not be played.
- The actual play time and the time displayed on the main unit may differ for VBR files.

Press the MENU button to switch to Menu mode.

- Use the SCROLL UP/SCROLL DOWN buttons to select the menu item you want, and then briefly press the SELECT button.



- **Now Playing:** Display the song currently playing.
- **Library:** Search and select music to play.
- **Photo:** View saved image files or slide shows
- **Settings:** Change the settings.

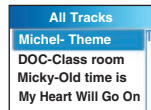
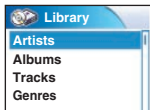
Note

- In Menu mode, press the Menu button to exit from the submenu you are in.

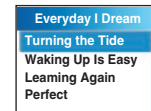
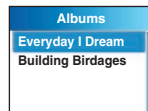
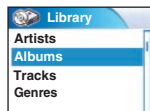
Browsing Your Music

In the Menu, use the SCROLL UP/SCROLL DOWN buttons to select the Library, and press the SELECT button.

Searching for and Selecting Music Files

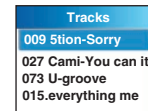
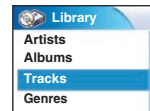


- **Artists:** Shows the artist name from the ID3 tag information stored in the music file.
- Press the ►|| button on the desired artist name.
All song titles corresponding to the artist name will be played.
- If you select an artist's name, song titles that correspond to the name will be displayed. You can use the SCROLL UP/DOWN buttons to move, and then press the SELECT button to play the selected song.

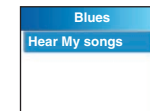
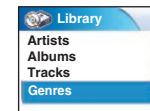


- **Albums:** Shows the album title from the ID3 tag information stored in the music file.
- Press the ►|| button on the desired album name.
All song titles corresponding to the album name will be played.
- If you select an album name, song titles corresponding to that album will be displayed. You can use the SCROLL UP/DOWN buttons to choose a song, and then press the SELECT button to play the selected song.

Browsing Your Music



- **Tracks:** Shows the song title from the ID3 tag information stored in the music file.
- You can use the SCROLL UP/DOWN buttons to move, and then press the SELECT button to play the selected song.



- **Genres:** Shows the song genre from the ID3 tag information stored in the music file.
- Press the ►|| button on the desired genre name.
All song titles corresponding to the genre name will be played.
- If you select an genre name, song titles corresponding to that genre will be displayed. You can use the SCROLL UP/DOWN buttons to choose a song, and then press the SELECT button to play the selected song.

Note

- What is an ID3 Tag ?

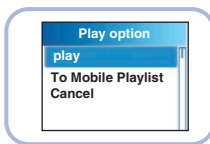
This is what is attached to an MP3 to carry information relevant to the file, such as the title, artist, album, year, genre and a comment field.

Browsing Your Music

Browsing Your Music

I Play Options (Artist, Album, Tracks, Genres)

- 1 Select Artist, Album, Track, Genre, and press and hold the SELECT button.
 - Move to Play Options screen.
- 2 In the Play Options, use the SCROLL UP/SCROLL DOWN buttons to select the desired play option, and press the SELECT button.



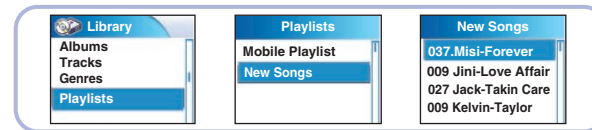
- **Play:** The selected title will be played.
If you select [Play] in Artist, Album and Genre, all titles corresponding to Artist, Album and Genre will be played.
- **To Mobile Playlist:** The selected title will be added to Mobile Playlist.
If you select Add To Mobile Playlist in Artist, Album and Genre all titles corresponding to each Artist, Album and Genre will be added to Mobile Playlist.
- **Cancel:** Go back to the previous screen.

Note

- Mobile Playlist is a play list always present in the unit. Songs stored in the unit can be easily added to or deleted from Mobile Playlist.

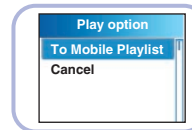
I Selecting a Playlist

- 1 In the Library, use the SCROLL UP/SCROLL DOWN buttons to select Playlists and then press the SELECT button.
- 2 Select the playlist that you want to play, and then press the SELECT button.
 - Saved files will appear in the selected playlist.
- 3 Press the SELECT button on the desired file.
 - The selected file will be played.



I Play Options (Playlists)

- 1 Select a title in the Playlists, and press and hold the SELECT button.
 - Move to Play Options screen.
- 2 In the Play Options, use the SCROLL UP/SCROLL DOWN buttons to select the desired play option, and press the SELECT button.



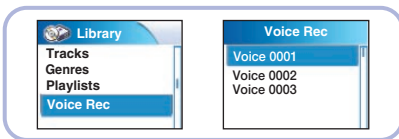
- **To Mobile Playlist:**
The selected title will be moved to Mobile Playlist.
- **Cancel:** Go back to the previous screen.

Browsing Your Music

Recording Voice

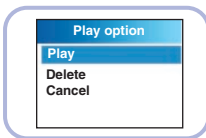
Searching for and Selecting Voice Files

- 1 In the Library, use the SCROLL UP/SCROLL DOWN buttons to select Voice Recordings, and then press the SELECT button.
 - Recorded voice file will appear.
- 2 Press the ►|| button or SELECT button on the desired file.
 - The selected file will be played.



Play Options (Voice Recordings)

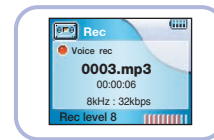
- 1 Select a Voice file in the Voice Recordings, and press and hold the SELECT button.
 - Move to Play Options screen.
- 2 In the Play Options, use the SCROLL UP/SCROLL DOWN buttons to select the desired play option, and press the SELECT button.



- Play : The selected title will be played.
- Delete : The selected title will be deleted.
- Cancel : Go back to the previous screen.

- 1 Press and hold the REC button to start voice recording.

- 2 Press the REC button.
 - Recording stops and the file is created.
 - Files are recorded and renamed Voice0001.mp3, Voice0002.mp3, and so on.
 - MP3 files are automatically added to your Library.



ENG

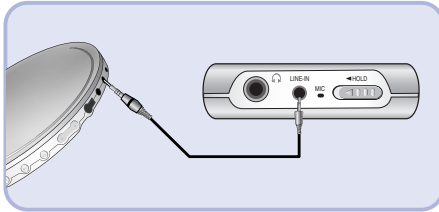
Note

- Even if you set the sampling and bit rates higher, voice recording will default to 8kHz 32 kbps
- Each voice recording file can be as long as 180 minutes.

Recording MP3s

Your player can be used to record directly from any external audio source such as a CD player, cassette player, home stereo or radio.

- 1 While in Music mode, use the Line-In cable to connect the main unit's line in jack and the line out jack of your external audio device.



- 2 Press and hold the REC button.
 - The music currently played on the external device will be saved as an MP3 file.
- 3 Press the REC button.
 - Recording stops and the file is created.
 - Files are recorded and renamed Line-in0001.mp3, Line-in0002.mp3, and so on.
 - MP3 files are automatically added to your Library.

Note

- If the battery is not sufficiently charged, the player will not completely encode the file.
- Adjust the volume of the external audio source to a suitable level and encode it. If the volume level is too high, the sound quality may be poor.

Viewing Image Files

- 1 Press the MENU button. In the Menu, select Photo and press the SELECT button.
- 2 Use the SCROLL UP/SCROLL DOWN buttons to select Albums.
- 3 Use the SCROLL UP/SCROLL DOWN buttons to move to the desired image file and press the SELECT button.
 - The selected image file will be displayed.
 - While viewing the image file, press the MENU button to move to an upper menu.
 - Press the I◀◀ button to view the previous image.
 - Press the ▶▶I button to view the next image.



Note

- Please refer to "Sending Images" under "Using Multimedia Studio" to send images to the player.

Viewing Slide Show

- 1 Press the MENU button.
Select Photo from the menu screen and press the SELECT button.
- 2 Use the SCROLL UP/SCROLL DOWN buttons to select Slide Show.
- 3 Use the SCROLL UP/SCROLL DOWN buttons to move to the desired file and then press the SELECT button.
 - The selected slide show will be displayed.
 - While viewing the slide show, press the SCROLL UP/SCROLL DOWN buttons to adjust the background music volume.
 - While viewing the slide show, press the MENU button to move to the previous screen.

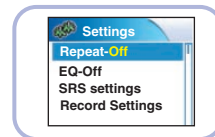


Note

- Slide show files can be created or edited in Multimedia Studio. Please refer to "Making Albums for Slide Shows" under "Using Multimedia Studio" for more information.
- Music is played only if music was attached at the time of album editing.
- Slide show viewing may be slow if too many files are selected or the image files are too large.

Shuffle and Repeat Playback

- 1 In the Menu, use the SCROLL UP/SCROLL DOWN buttons to select Settings, and then press the SELECT button.
- 2 Use the SCROLL UP/SCROLL DOWN buttons to select Repeat.
- 3 Press the SELECT button to choose Repeat Off, One, All or Shuffle.
 - Select the desired mode, and then press the MENU button to go to the main menu.



- **Off:** Select this to listen to songs in the current playlist one at a time in the given order.
- **One (↵):** Select this to repeatedly play just one track.
- **All (↻):** Select this to repeatedly play all tracks in the current playlist.
- **Shuffle (X):** Select this to play all stored tracks in random order.

Equalizer Settings

1 In the Menu, use the SCROLL UP/SCROLL DOWN buttons to select Settings, and then press the SELECT button.

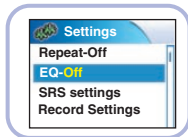
2 Use the SCROLL UP/SCROLL DOWN buttons to select EQ.

3 Press the SELECT button until the desired mode appears.

- Select the desired mode, and then press the MENU button to go to the main menu.

Off → Jazz → Classical → Pop → Rock → Bass boost → WOW → SRS → TruBass

- **WOW:** This feature allows you to enjoy the SRS and Trubass features simultaneously.
- **SRS:** You will hear 3D Stereo sound.
- **TruBass:** This is a bass boost feature that adds fullness to the sound.



Note

- SRS is a trademark of SRS Labs, Inc. WOW technology is incorporated under license from SRS labs, Inc..
- Please adjust the volume to a suitable level, as the volume may increase in the SRS setting.
- This unit supports sampling frequencies of 32KHz, 44.1KHz or 48KHz.

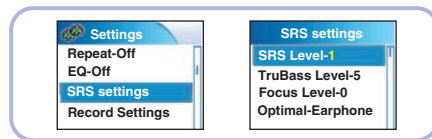
SRS Settings

1 In the Menu, use the SCROLL UP/SCROLL DOWN buttons to select Settings, and then press the SELECT button.

2 Use the SCROLL UP/SCROLL DOWN buttons to select SRS settings, and then press the SELECT button.

3 Use the SCROLL UP/SCROLL DOWN buttons to select SRS Level, TruBass Level, Focus Level and Optimal, and then press the SELECT button to make the desired SRS Settings.

- Complete the desired setting, and then press the MENU button to go to the main menu.
- **SRS, TruBass, Focus Level:** The level for SRS, TruBas and Focus can each be set within the range of 0 to 10.
 - Focus : You can enjoy clearer tone during playback.
- **Optimal:** It optimizes the SRS function according to the device connected. Earphone → Speaker → Headphone → Carpack

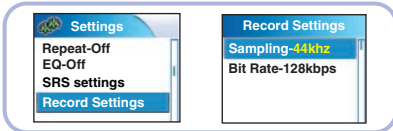


Note

- SRS settings are available only if WOW, SRS, or TruBass are selected in the EQ menu.

Recording Settings

- 1 In the Menu, use the SCROLL UP/SCROLL DOWN buttons to select Settings, and then press the SELECT button.
- 2 Use the SCROLL UP/SCROLL DOWN buttons to select Record Settings, and then press the SELECT button.
- 3 Use the SCROLL UP/SCROLL DOWN buttons to select Sampling and Bit Rate, and then briefly press the SELECT button to make the desired recording setting.
 - Complete the desired setting, and then press the MENU button to go to the main menu.
 - **Sampling:** Each time the Select button is pressed, the selection toggles between 32KHz and 44KHz.
 - **Bit Rate:** Each time the Select button is pressed, the selection changes as follows: 96 → 128 → 160Kbps.
 - Selecting a higher bit rate results in better quality sound, but uses more memory space.

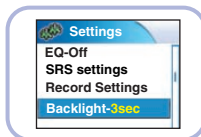


Note

- Voice can be recorded only at 8KHz 32kbps.

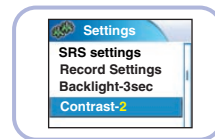
Backlight Settings

- 1 In the Menu, use the SCROLL UP/SCROLL DOWN buttons to select Settings, and then press the SELECT button.
- 2 Use the SCROLL UP/SCROLL DOWN buttons to select Backlight.
- 3 Press the SELECT button until the desired Backlight On-Time appears.
 - Off, 3, 5, 10, 15, 30seconds and Always are available for Backlight-On Time.



Contrast Settings

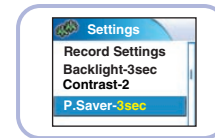
- 1 In the Menu, use the SCROLL UP/SCROLL DOWN buttons to select Settings, and then press the SELECT button.
- 2 Use the SCROLL UP/SCROLL DOWN buttons to select Contrast.
- 3 Press the SELECT button until the desired screen contrast appears.
 - The setting range of the contrast, which adjusts the contrast of the screen, is 0 to 4.



ENG

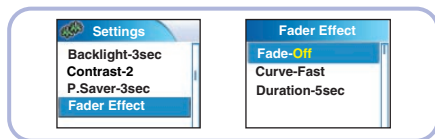
Power Save Screen Settings

- 1 In the Menu, use the SCROLL UP/SCROLL DOWN buttons to select Settings, and then press the SELECT button.
- 2 Use the SCROLL UP/SCROLL DOWN buttons to select P.saver screen.
- 3 Press the SELECT button until the desired screen power save time appears.
 - Off → 15 sec → 30 sec → 45 sec → 1 min
 - If the selected time elapses while playing music, the screen switches to power save mode. In power save mode, the music continues to play but the music information is not displayed on the screen.
 - Press the ►|| button in power save mode to return to the normal playback screen.



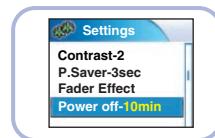
Fader Effect

- 1** In the Menu, use the SCROLL UP/SCROLL DOWN buttons to select Settings, and then press the SELECT button.
- 2** Use the SCROLL UP/SCROLL DOWN buttons to select Fader Effect, and then press the SELECT button.
- 3** Use the SCROLL UP/SCROLL DOWN buttons to select Fade, Curve, and Duration, and then briefly press the SELECT button.
 - Complete the desired setting, and then press the MENU button to go to the main menu.
 - **Fade:** Each time the SELECT button is pressed, the selection changes as follows :
 - Fade Off: Music is played back at the volume level you set.
 - Fade In: Volume gradually increases only when playback starts.
 - Fade Out: Volume gradually decreases at the end only.
 - Fade In/Out: Volume gradually increases when playback starts and gradually decreases at the end.
 - **Curve :** Each time the SELECT button is pressed, the selection changes as follows :
 - Linear: The speed at which the volume of music increases or decreases is fixed.
 - Express slow: The speed at which the volume of music increases or decreases is slow.
 - Express fast: The speed at which the volume of music increases or decreases is fast.
 - **Duration :** Each time the SELECT button is pressed, the selection changes as follows :
3 → 5 → 10 → 15sec



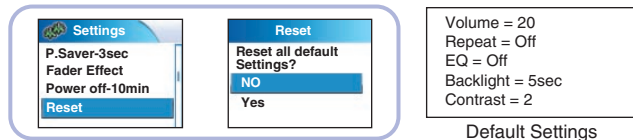
Power Off Settings

- 1** In the Menu, use the SCROLL UP/SCROLL DOWN buttons to select Settings, and then press the SELECT button.
- 2** Use the SCROLL UP/SCROLL DOWN buttons to select Power off.
- 3** Press the SELECT button until the desired power-off time appears.
 - Select the desired power-off time, and then press the MENU button to go to the main menu.
OFF → 30sec → 1min → 5min → 10min → 15min.



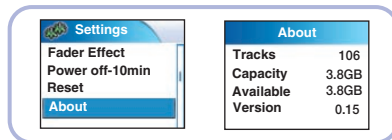
Restoring Default Settings

- 1 In the Menu, use the SCROLL UP/SCROLL DOWN buttons to select Settings, and then press the SELECT button.
- 2 Use the SCROLL UP/SCROLL DOWN buttons to select Reset, and then press the SELECT button.
 - If you select Reset, all selected settings will be restored to the default setting.



Player Information

- 1 In the Menu, use the SCROLL UP/SCROLL DOWN buttons to select Settings, and then press the SELECT button.
- 2 Use the SCROLL UP/SCROLL DOWN buttons to select About, and then press the SELECT button.
 - If you select About, you can check the total number of tracks, total capacity, available capacity and software version information.



Troubleshooting

One of the messages below appears:

- Connect to PC and repair firmware with recovery utility.
- Connect to PC and rebuild database with recovery utility.

The message "Loading" appears and the device does not operate when you turn on the power.

File search does not work properly in the Menu Library.

The player doesn't work. There is nothing showing on the display panel.

- Reset the Player
- Connect the charger.
- Make sure the Hold switch is in the off position.

There is no sound even if I press the Play button in Music mode.

- Check if there are MP3 or WMA files on the player.
- Non-playable file formats (e.g. MPEG1 LAYER 1 file) cannot be played.
- Files that have been downloaded without using the Napster cannot be played.

I cannot download files.

- Check the battery's power level.
- Check if the driver is installed correctly on your PC.
Reinstall the software from the installation CD.
- Check the USB connection between the player and your PC.
- Check if there is the "unplug/eject" or "Safely Remove Hardware" icon located in your icon tray at the bottom of your screen.

Cannot view image files.

- Files downloaded without using Multimedia Studio cannot be viewed on the screen.

Troubleshooting

The Backlight is off.

- Please check the Backlight settings.
- Backlight is automatically disabled for longer playback in case of low battery power.

The playback time display during playback does not seem right.

- Check if you are not playing a VBR (Variable Bit Rate) file. VBR files are only partially supported.

The LCD window is too dark.

- Check the contrast in the Menu.
- Please check if the player is in power save mode.

During playback, some unknown characters are displayed on the display panel.

- Unsupported languages will be indicated by an asterisk (*).

A "Noartist/Noalbum" file path appears on the playback screen in place of the selected music file's song title.

- There is no ID3 tag information for the music file. Edit the song title, artist, and album information of the song.

It takes a long time when I search songs by Song Title, Artist, or Album.

- If there are many music files on your player, it may take longer to read them.

Specifications

Model	YH-820
Internal Memory Capacity	5GB
Built-in Rechargeable Battery Capacity	650mAh
Voltage	3.7V (Li-ion Rechargeable Battery)
Dimensions/Weight	1.96" X 0.54" X 3.47"/2.98oz
Case	Aluminum/Plastic
File Transfer Speed	Max. 50Mbps
Signal to Noise Ratio	90dB with 20KHz LPF(based on 1KHz OdB)
Earphone Jack Output Power	12mW(16Ω)
Output Frequency Range	22Hz~20KHz
Temperature Range	-5~ +35°C(23~95F)
File Support	MPEG1/2/2.5 Layer3(8Kbps ~ 320Kbps, 8KHz ~ 48KHz) WMA (48Kbps ~ 192Kbps, 8KHz ~ 48KHz)

The product unit accompanying this user manual is licensed under certain intellectual property rights of certain third parties. In particular, this product is licensed under the following US patents: 5,991,715, 5,740,317, 4,972,484, 5,214,678, 5,323,396, 5,539,829, 5,606,618, 5,530,655, 5,777,992, 6,289,308, 5,610,985, 5,481,643, 5,544,247, 5,960,037, 6,023,490, 5,878,080, and under US Published Patent Application No. 2001-44713-A1.

This license is limited to private non-commercial use by end-user consumers for licensed contents. No rights are granted for commercial use. The license does not cover any product unit other than this product unit and the license does not extend to any unlicensed product unit or process conforming to ISO/IEC 11172-3 or ISO/IEC 13818-3 used or sold in combination with this product unit. The license only covers the use of this product unit to encode and/or decode audio files conforming to the ISO/IEC 11172-3 or ISO/IEC 13818-3. No rights are granted under this license for product features or functions that do not conform to the ISO/IEC 11172-3 or ISO/IEC 13818-3.

Safety Information

FCC

This device complies with part 15 of the FCC Rules. Operation is subject to the following two conditions:

(1) This device may not cause harmful interference, and (2) this device must accept any interference received, including interference that may cause undesired operation.

Caution: Any changes or modifications in construction of this device which are not expressly approved by the party responsible for compliance could void the user's authority to operate the equipment

Note: This equipment has been tested and found to comply with the limits for a Class B digital device, pursuant to part 15 of the FCC Rules. These limits are designed to provide reasonable protection against harmful interference in a residential installation. This equipment generates, uses and can radiate radio frequency energy and, if not installed and used in accordance with the instructions, may cause harmful interference to radio communications. However, there is no guarantee that interference will not occur in a particular installation.

If this equipment does cause harmful interference to radio or television reception, which can be determined by turning the equipment off and on, the user is encouraged to try to correct the interference by one or more of the following measures:

- ◆ Reorient or relocate the receiving antenna.
- ◆ Increase the separation between the equipment and receiver.
- ◆ Connect the equipment to an outlet on a circuit different from that to which the receiver is connected.
- ◆ Consult the dealer or an experienced radio/TV technician for help.

FCC

Any changes or modifications not expressly approved by the grantee of this device could void the user's authority to operate the device.

Compliance

This product conforms to the following Council Directive:

- ◆ Directive 89/336/EEC, 92/31/EEC(EMC)

Declaration of Conformity

Name: Samsung Electronics Co., Ltd
Address: 416, Maetan-3Dong, Paldal-Gu, Suwon City, Kyungki-Do, Korea 442-742
declares under its sole responsibility that the product
Trade Name: Samsung Electronics Co., Ltd
Model Number: YH-820
has been tested according to the FCC/CISPR22/95 requirements for Class B devices and found compliant with the following standards

Safety Information

EMI/EMC: AnSI C63.4 1992, FCC Part 15 Subpart B

This device complies with part 15 of the FCC Rules.

Operation is subject to the following two conditions:

- 1.This device may not cause harmful interference, and
- 2.This device must accept any interference received, including interference that may cause undesirable operation.

Party Responsible for Product Compliance

Samsung Electronics America
QA Lab.
3351 Michelson Dr. Suite #290
Irvine, CA92612

Warranty

Warranty

Samsung warrants this product as free of defects in material, design and workmanship for a period of twelve(12) months from the original date of purchase.

If during the period of warranty this product proves defective under normal use and service, you should return the product to the retailer from whom it was originally purchased. The liability of Samsung and its appointed maintenance company is limited to the cost of repair and/or replacement of the unit under warranty. Return of the product for defective reasons should be to the original purchaser; however, Samsung Authorized Dealers and Authorized Service Centers will comply with the warranty on the terms issued to purchasers in the country concerned. For further information relating to the Authorized Service Centers contact; 1-800-SAMSUNG (1-800-726-7864) www.samsung.com

WARRANTY CONDITIONS:

- 1.The warranty is only valid when the warranty card is properly completed, and upon presentation of the proof of purchase consisting of original invoice or sales slip confirmation, indicating the date of purchase, dealer's name, model, serial No. and product number. Samsung reserves the right to refuse warranty service if this information has been removed or changed after the original purchase of the product from the dealer.
- 2.Samsung's obligations are to the repair of the defective part, and at its discretion, replacement of the product (service exchange unit).
- 3.Warranty repairs must be carried out by an Authorized Samsung Dealer/Service Center. No reimbursement will be made for repairs carried out by non Samsung Centers, and warranty coverage will not be valid for any repairs or damage caused by such repairs.
- 4.Repair or replacement under the terms of this warranty does not give right to extension to or a new starting of the period of warranty. Repair or direct replacement under the terms of this warranty may be fulfilled with functionally equivalent service exchange units.

5. The warranty is not applicable in cases other than defects in material, design and workmanship. The warranty does not cover the following:

- ◆ Periodic checks, maintenance, repair and replacement of parts due to normal wear and tear.
- ◆ Abuse or misuse, including but not solely limited to the failure to use this product for its normal purposed or in accordance with Samsung's instructions usage and maintenance.
- ◆ Use of the product in conjunction with accessories not approved by Samsung for use with this product.
- ◆ Failure of the product arising from incorrect installation or use not consistent with technical or safety standards in current force, or failure to comply with product manual instructions.
- ◆ Accidents, Acts of God or any cause beyond the control of Samsung caused by lightning, water, fire, public disturbances and improper ventilation.

◆ Unauthorized modifications carried out for the product to comply with local or national technical standards in countries for which the Samsung product was not originally designed.

◆ Repairs performed by non-authorized service centers such as opening of the product by a non-authorized person.

◆ The model, serial No. and product number on the product has been altered, deleted, removed or made illegible.

6. This warranty does not affect the consumer's statutory rights nor the consumers rights against the dealer from their purchase/sales agreement.

Warranty

Warranty

THERE ARE NO EXPRESS WARRANTIES OTHER THAN THOSE LISTED AND DESCRIBED ABOVE, AND NO WARRANTIES WHETHER EXPRESS OR IMPLIED, INCLUDING, BUT NOT LIMITED TO, ANY IMPLIED WARRANTIES OF MERCHANTABILITY OR FITNESS FOR A PARTICULAR PURPOSE, SHALL APPLY AFTER THE EXPRESS WARRANTY PERIODS STATED ABOVE, AND NO OTHER EXPRESS WARRANTY OR GUARANTY GIVEN BY ANY PERSON, FIRM OR CORPORATION WITH RESPECT TO THIS PRODUCT SHALL BE BINDING ON SAMSUNG, SAMSUNG SHALL NOT BE LIABLE FOR LOSS OF REVENUE OR PROFITS, FAILURE TO REALIZE SAVINGS OR OTHER BENEFITS, OR ANY OTHER SPECIAL, INCIDENTAL OR CONSEQUENTIAL DAMAGES CAUSED BY THE USE, MISUSE OR INABILITY TO USE THIS PRODUCT, REGARDLESS OF THE LEGAL THEORY ON WHICH THE CLAIM IS BASED, AND EVEN IF SAMSUNG HAS BEEN ADVISED OF THE POSSIBILITY OF SUCH DAMAGES. NOR SHALL RECOVERY OF ANY KIND AGAINST SAMSUNG BE GREATER IN AMOUNT THAN THE PURCHASE PRICE OF THE PRODUCT SOLD BY SAMSUNG AND CAUSING THE ALLEGED DAMAGE, WITHOUT LIMITING THE FOREGOING, PURCHASER

ASSUMES ALL RISK AND LIABILITY FOR LOSS, DAMAGE OR INJURY TO PURCHASER AND PURCHASER'S PROPERTY AND TO OTHERS AND THEIR PROPERTY ARISING OUT OF THE USE, MISUSE OR INABILITY TO USE THIS PRODUCT SOLD BY SAMSUNG NOT CAUSED DIRECTLY BY THE NEGLIGENCE OF SAMSUNG. THIS LIMITED WARRANTY SHALL NOT EXTEND TO ANYONE OTHER THAN THE ORIGINAL PURCHASER OF THIS PRODUCT, IS NONTRANSFERABLE AND STATES YOUR EXCLUSIVE REMEDY.

Some states do not allow limitations on how long an implied warranty lasts, or the exclusion or limitation of incidental or consequential damages, so the above limitations or exclusions may not apply to you. This warranty gives you specific legal rights, and you may also have other rights which vary from state to state. This product is for personal use only, and is only for use in compliance with the limitations of copyright and other laws.

To obtain warranty service, please contact SAMSUNG at:
 Samsung Electronics America, Inc.
 400 Valley Road, Suite 201 Mount Arlington,
 NJ 07856
 1-800-SAMSUNG (1-800-726-7864)
www.samsung.com
 081299