

Contents

Safety Guidelines

Safety Instructions	4
Battery Charger Safety	6

Introduction

Quick Start	7
Charging the battery	8
Samsung Napster Player Feature Overview	10
Napster Overview	12
System Requirements	13
Components	14
Location of Controls	15

Installation and Setup

Installing the Driver & Utilities	18
Using Utilities	19
Installing the Napster Software	21
Registering for a Napster Account	22
Connecting your Samsung Napster Player to your PC	23

Using Napster with Your Samsung Napster Player

Searching for and Purchasing Music	24
Importing Your Existing Music	27
Transferring Music to Your Samsung Napster Player	29
Deleting Music on Your Samsung Napster Player	31
Getting Help with Napster	33

Using Audible with Your Samsung Napster Player

Welcome to Audible and The Getting Started Guide!	34
Using Audible with Your Samsung Napster Player	35
Listen to Audiobooks from Audible.com on your Samsung Napster Player	36
● Step One – Browse and Purchase Content from Audible	36
● Step Two – Downloading Your Audible Audio	38
● Step Three – Transferring Audible audio programs from your PC	39

Using Your Samsung Napster Player

Playing Music	40
Adjusting Volume	41
Hold Feature	41
Searching Within Music Files	42
Menu Mode	43
Browsing Your Music	44
● Searching for and Adding Music Files	44
● Play Options	46
● Selecting a Playlist	47
● Play Options(Playlists)	47
● Searching for and Selecting Voice Files	48
● Play Options(Voice Recordings)	48
● Searching for and Selecting Audible Contents	49
Playing FM Radio	51
Recording From FM Radio	54
Recording Voice	54
Recording MP3s	55

Additional Features

Shuffle and Repeat Playback	56
Equalizer Settings	57
Recording Settings	58
Screen Settings	59
Tuner Region Settings	60
Tuner Search Level Settings	61
Fader Effect Settings	62
Auto Power Off Settings	63
Restoring Default Settings	64
Player Information	65










Customer Support

Troubleshooting	66
Specifications	68
Communications Regulation Information	69
Warranty	71

Safety Guidelines

Safety Instructions

Please read and understand all the instructions to avoid injury to yourself and damage to the device

<p>Do not expose to extreme temperatures (above 95°F or below 23°F). Do not expose to moisture.</p> 	<p>Do not apply excessive pressure to the device. Do not drop the player.</p> 	<p>Do not let any foreign matter spill into the device.</p> 
<p>Do not place heavy objects on top of the device.</p> 	<p>Do not expose to chemicals such as benzene and thinners.</p> 	<p>Do not expose to direct sunlight or heat sources.</p> 
<p>Do not store in dusty areas.</p> 	<p>Do not try to disassemble and repair the device yourself.</p> 	<p>Do not use the unit near any appliance that generates a strong magnetic field.</p> 

* Please be aware that we disclaim all responsibility for damages from loss of saved or recorded data due to breakdown, repair or other causes.

Earphones

Follow Traffic Safety Instructions

- Do not use earphones while driving an automobile or riding a bicycle.
- It is not safe to listen at high volume while walking down the street, especially while crossing at intersections.

Protect your ears

- Do not turn the volume too high.
Doctors warn against prolonged exposure to high volume.
- If you have ringing in your ears, turn the volume down or discontinue listening.

Ambient Operating Conditions

- Ambient temperature: 5°C ~ 35°C (41°F ~ 95°F)
Humidity : 10 ~ 75%

Environmental Information

- Follow local guidelines for waste disposal when discarding packages, batteries, and old electronic appliances.
- Your player is packaged with cardboard, polyethylene, etc. and does not use any unnecessary materials

Battery Charger Safety



CAUTION

RISK OF ELECTRIC SHOCK. DO NOT OPEN



The uninsulated parts inside the charger could cause electric shock.
For your safety, do not open the case of the charger.



Read this User Manual to prevent any problems that may occur while using the charger.

Warning

- Use the charger away from water sources to avoid fire or electric shock.

Caution

- To avoid electric shock, use the charger only with a power outlet that matches the shape of the converter's plug.
- Make sure that the charger's plug is inserted all the way into the outlet.

Introduction Quick Start

Here is a quick outline of the basic steps you need to take to get up and running with your Samsung Napster Player.

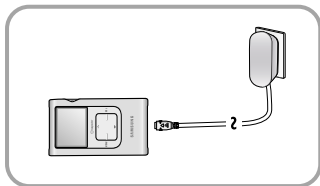
1. Charge the battery (see page 8).
2. Install the Napster software (see page 18).
3. Connect your Samsung Napster Player to your PC with a USB Cable (see page 23).
4. Transfer music to your Samsung Napster Player (see page 29).
5. Play music (see page 39).

Charging the Battery

A charger is supplied with your Samsung Napster Player.

Plug the charger into a wall outlet.

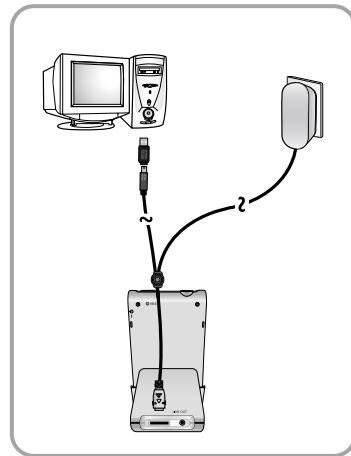
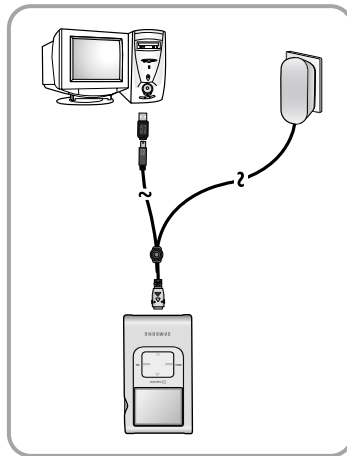
- ☀ When charging is complete, "Charging Complete" is shown in the display.



Caution

- To avoid the risk of fire, do not charge longer than the specified charge time of 12 hours.
- Do not plug several devices into the same outlet.
- Do not use a rechargeable battery or charger that is defective.
- When using the rechargeable battery for the first time or after several months of non-use, fully charge it first.
- Overcharging or overdischarging will reduce the battery life.
- The rechargeable battery is a consumable item and its capacity will decrease gradually.
- To prolong the life of your battery, use the fully charged battery until it is completely discharged, and then fully charge it again before use. If you charge the battery that is not completely drained, the battery operating time will decrease. In this case, fully cycle (fully charge and then fully discharge) the battery several times.
- Do not let metallic objects, such as necklaces or coins, come into contact with the terminals (metallic parts) of the charger and the built-in rechargeable battery. A fire or electric shock may result.

The rechargeable battery drains quickly when you download or upload recorded files. Always use the charger when transferring files.



Samsung Napster Player Feature Overview

Fully Integrated with Napster

Transfer the tracks you purchase with Napster seamlessly to your Samsung Napster Player, and use Napster to access and manage your entire online collection.

Audible Content Playback

Audible is web service where you can download digital audiobooks, radio programs, audio magazines and newspapers.

Mass Storage Device Support

You can use the built-in 20GB hard drive to store your entire music library, plus use it as an external drive on your PC to store other data files.

Direct MP3 Recording

You can convert music from CDs, cassettes, and radio into MP3 files without a PC.

MP3 & WMA Playback

Your Samsung Napster Player supports playback of both MP3 and WMA.

USB 2.0 High Speed Data Transfer

Maximum data speed transfer of 120 Mbps.

High-Fidelity Sound

The Samsung Napster Player has a built-in equalizer to adjust sound to your preference.

Built-in Rechargeable Li-ion Battery

The built-in rechargeable lithium battery provides up to 9 hours* of play time.

* Time may vary depending on usage pattern.

Napster Overview

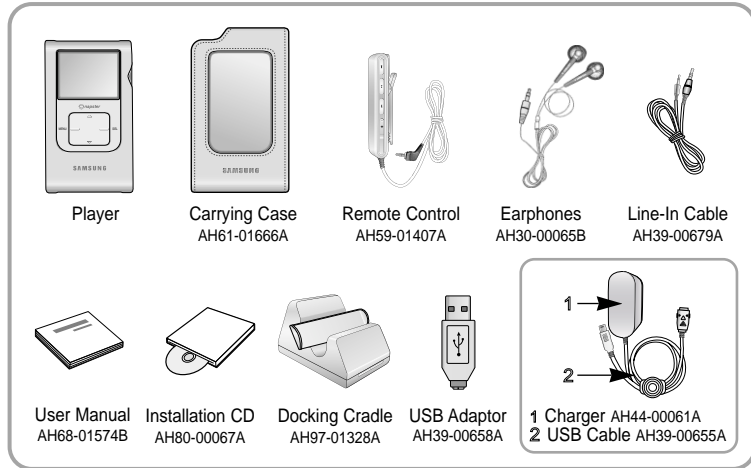
- Napster is the premier online music service that gives you instant access to over half a million tracks. Tracks purchased on Napster can be seamlessly transferred to your Samsung Napster Player.
- If you sign up for the Napster subscription service, you can also get unlimited streaming and downloading of tracks to play on your computer, as well as access to other premium features.
- This user manual contains instructions for using your Samsung Napster Player with Napster. Additional help for Napster is available from the online Napster User Guide and FAQs available from the Napster Help menu.

System Requirements

Minimum system requirements are as follows:

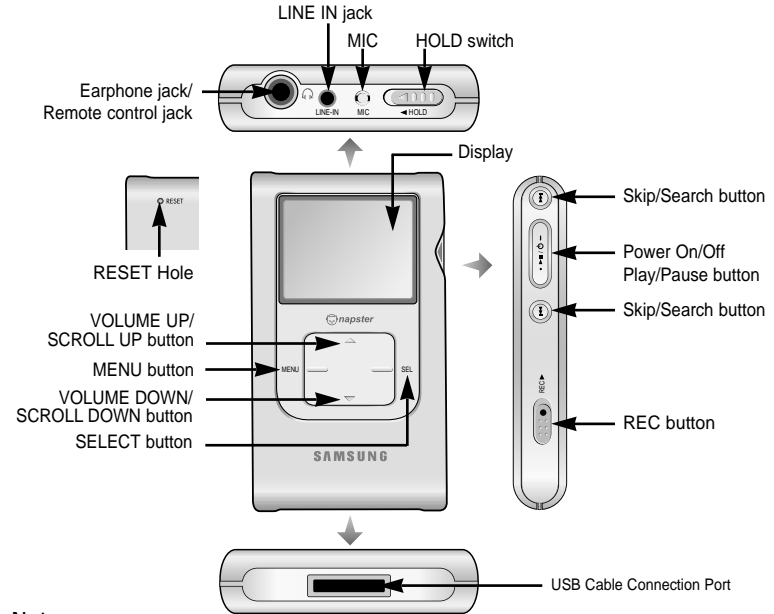
- Operating System: Windows 2000 Service Pack 4 or Windows XP
Note : Napster is not supported on Macintosh or Windows 95, 98, NT, or ME.
- Processor: Pentium-class CPU equivalent or better
- Memory: 64MB of RAM minimum
- Hard Disk space: Approximately 9 to 12 MB for the Napster installer and 100 MB for Windows Media Player 9 Series (if not already installed)
- Sound card and speakers
- Browser: Microsoft Internet Explorer version 6.0 or higher
Note : For IE 5.5 users, service pack 1 or higher is required.
- Windows Media Player 9 Series
- Active Internet connection
(33.3 Kbps minimum, broadband/128+ Kbps recommended)
- USB Requirement: USB 2.0 required for maximum transfer rate
- CD-ROM Drive

Components



● The appearance of the accessories shown is subject to change for product improvement without prior notice.

Location of Controls

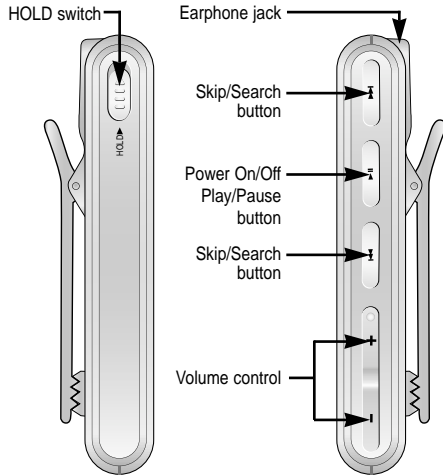


Note

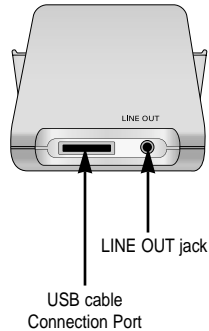
Reset the player by pressing the RESET hole using a pointed object such as a safety clip.

Location of Controls

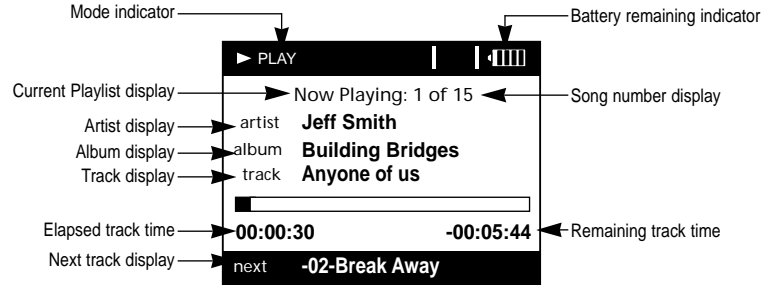
Remote Control



Docking Cradle



Display

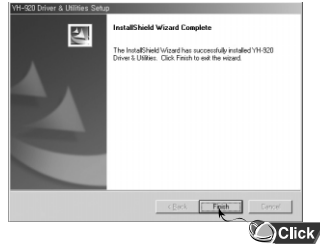


Installation and Setup

Installing the Driver & Utilities

You must install Driver & Utilities before using Samsung Napster Player.

- 1 Insert the installation CD that came with your Samsung Napster Player and follow the instructions to install the driver & Utilities.
- 2 Follow the on-screen instructions as the InstallShield Wizard guides you through the installation. When the installation has completed, click [Finish].

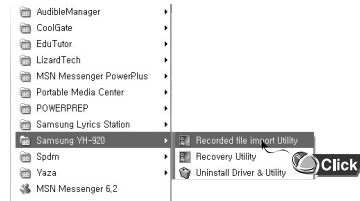


Using Utilities

Recorded file import Utility

- You can upload the files recorded in Samsung Napster Player to your PC.

- 1 Connect Samsung Napster Player to PC.
- 2 Go to [Start]-[All Programs]-[Samsung YH-920] on the desktop and click [Recorded File import Utility].
- 3 When [Browse For Folder] screen appears, select the folder to save the files in.



Notice

The files are uploaded to PC. The files in the player will be automatically deleted after uploading.

Recovery Utility

The Recovery Utility can be used to recover your system in the event the following occurs:

- If a message window appears as shown below



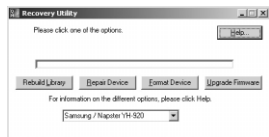
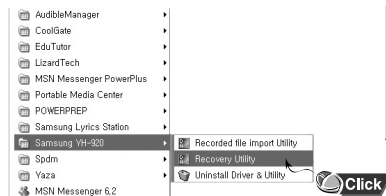
- If "LOADING LIBRARY" message appears and the device does not operate any more when you turn on the power.
- If file search does not work properly in Menu Library.

1 Connect Samsung Napster Player to PC.

2 Go to [Start]-[All Programs]-[Samsung YH-920] on the desktop and click [Recovery Utility].

3 Select the recovery method you want.

- See help for details on each method.



Installation and Setup

Installing the Napster Software

* **Please DO NOT run Napster and Audible softwares simultaneously.**

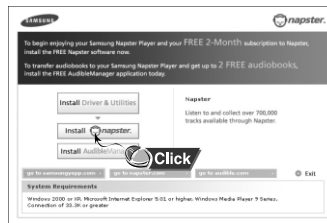
Before you install the Napster software, review the system requirements on page 13.

If you don't already have Windows Media Player 9, please go to <http://www.microsoft.com/downloads> and download it.

You will first need to install the Napster application:

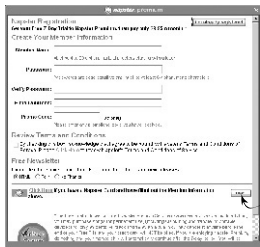
1 Insert the installation CD that came with your Samsung Napster Player and follow the instructions to install Napster.

2 Follow the on-screen instructions as the InstallShield Wizard guides you through the installation. When the installation has completed, click [Finish].



Registering for a Napster Account

- 1 After you have completed the installation, create a member name and password. Enter the required information and click [next].
- 2 Napster is free to search, browse, and play music clips. If you want to become a member of the Napster subscription service, enter your credit card information and click on the [submit] button. Note that you do not have to enter a credit card to register.



Note

If you are already a Napster member, click on the [I'm already registered] button in the upper right corner and sign in.



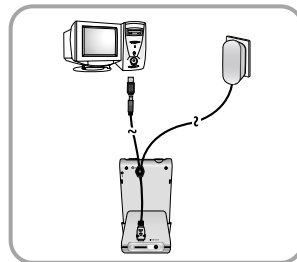
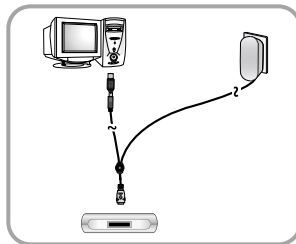
- 3 Sign in to Napster. You can use Napster to copy your CDs to your PC and Samsung Napster player. You can search, browse, and play music clips in the Napster catalog. You can buy songs and albums individually, or you can subscribe for unlimited access to the entire catalog of Napster content.

Connecting Your Samsung Napster Player to Your PC

- 1 Charge the battery on the Samsung Napster Player, and then press the On/Off button to turn on the power.
- 2 Connect one end of the USB cable to the USB port on your PC.
- 3 Remove the cover located at the bottom and connect the other end of the USB cable to the USB cable socket on the Samsung Napster player.



Be sure to perform a safe removal before physically disconnecting the USB cable, otherwise your PC may malfunction.
For instructions on safely removing your device, see page 31.



Note

When updates are available for the software that runs on your Samsung Napster Player, the Napster application will automatically notify you and update your player. This ensures that your Samsung Napster Player is up-to-date with all the latest features and improvements.

Using Napster with Your Samsung Napster Player

Searching for and Purchasing Music

Copying Tracks From A Music CD

- 1** Insert the CD into the drive.
- 2** Switch to the Library view if necessary, and select the CD icon. By default, all tracks are checked. If you don't want to rip the entire CD, you can use the select all/deselect all buttons to change the selections.
- 3** You can initiate ripping in one of two ways:
 - a. Select the CD icon in the library tree and select Rip CD from the right-click menu to rip the entire CD.
 - b. To rip some of the tracks, make sure the tracks you want are checked in the tracklist; then click the Rip button, or select Rip Checked Tracks from the right-click menu.

Note

Tracks are saved in the directory you specified for you Napster music.

An optional MP3 encoder is available for download. You can access this encoder from the "Update Napster" page of the My Account menu.

If the MP3 encoder is installed the first time you rip a CD, you are prompted to set the options for file type and quality. The default is 128 kbps WMA. Once you click [OK], the ripping process begins. You can change your ripping options later from the File, Options menu.

Here are some things you should know about tracks purchased on Napster:

- Tracks purchased on Napster are yours to keep and can be burned to CD and seamlessly transferred to your Samsung Napster Player.
- You can have your purchased tracks on up to three computers. To copy your purchased tracks to another computer, use the **[Sync/Restore]** feature on Napster available from the **[My Account]** menu.

Note

If you try to transfer to your Samsung Napster Player tracks that have not yet been purchased, you will automatically be prompted to purchase the tracks.

To search for and purchase music on Napster:

1 Launch the Napster application by double-clicking the Napster icon on your desktop.

Note

If you do not have the Napster application, see page 18 for instructions on installing Napster.

2 If there is a specific track you are looking for, simply type the artist, album, or track name in the search field in the upper right corner, select the search type from the drop-down menu, and click **[go]**. If you do not know specifically what you are looking for, you can go to the Browse tab to browse for music by genre.



3 Select the track(s) you would like to purchase.

Note

You can also purchase an entire album by clicking the provided [buy album] link or selecting a track on the album, right-clicking, and choosing [Buy Album].

4 Click the **[buy track]** button, or right-click and choose **[Buy Track(s)]**.

5 A confirmation page with your selected tracks is displayed. Click **[Next]**.

6 If it is your first track purchase and you are not a Premium service member, you will be prompted to enter your credit card information.

Once you purchase the track, the track is automatically downloaded to your Napster Library. Next, drag and drop the selected MP3 files to the Samsung/Napster YH-920. Purchased tracks can then be burned to CD and transferred to your Samsung Napster Player.

Importing Your Existing Music

You can use Napster to import existing WMA or MP3 files into your Napster library. Once these imported tracks are in your Napster Library, you can transfer them to your Samsung Napster Player.

Note

If you do not have the Napster subscription service and you attempt to import Napster tracks sent to you by other Napster members, you will be prompted to either purchase the tracks or sign up for the Napster subscription service.

Any other protected WMA files will require that you have the correct license for those tracks to import them into Napster.

If you purchase the tracks, you can burn them and transfer them to your Samsung Napster Player. If you sign up for the Napster subscription service, the imported tracks are treated as regular Napster downloads.

To import WMAs or MP3s into your Napster Library:

1 Select **[Import Track(s) to My Library]** from the **[File]** drop-down menu on the Napster application.

2 Browse to and select the directory where the tracks are located from the **[Folder]** window on the left.

3 Select the particular tracks from the **[Files]** window on the right. To select multiple tracks, hold down the **[Ctrl]** or **[Shift]** keys while selecting, or click **[select all]**.

4 Click the [OK] button.



5 A progress bar displays while the tracks are importing. When the tracks successfully import, they will be stored and accessible from your Napster Library. You will also be prompted to edit the track data for any non-Napster tracks (see next section).

Transferring Music to Your Samsung Napster Player

Tracks that you purchase through Napster can be transferred seamlessly to your Samsung Napster Player using the Napster application.

Note

Before transferring, make sure your Samsung Napster Player battery is charged or connected to AC power, otherwise your transfer may not complete successfully.

When you plug your device into your computer through the USB port, the Napster application will automatically recognize it and display it as Samsung/Napster YH-920 under the menu tree of your Napster Library. If your Samsung Napster Player is not connected or detected, it will display a "Portable Device" icon.

If your Samsung Napster Player is not listed, check your connection and verify that the Samsung Napster Player is detected by your computer.

Note

If you try to transfer tracks to your Samsung Napster Player that you have not purchased yet, you will automatically be prompted to purchase the tracks.

Make sure your Samsung Napster Player battery is charged or connected to AC power.

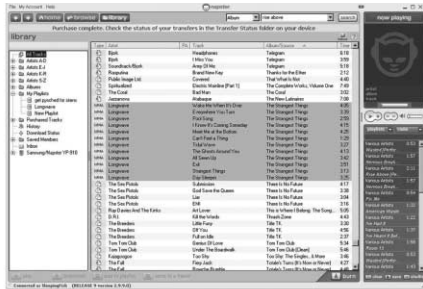
To transfer tracks from your Napster Library to your Samsung Napster Player:

1 Locate the track(s) that you want to transfer in your Library.

Note

You can transfer tracks from anywhere else in Napster by right-clicking and selecting [Transfer Track(s) to Portable Device]

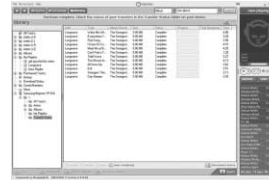
2 Click and hold the mouse on the track(s), then drag the tracks to the listed **Samsung/Napster YH-920** icon in the left window of your Napster Library (refer to the following figure).



Note

If the tracks are Napster tracks that you have not already purchased, you will be prompted to purchase them.

3 The progress of the transfer displays under Transfer Status. To view transfer status, click on the + in front of **Samsung/Napster YH-920** under your Library to expand the sub-folders, and then click on **[Transfer Status]**.



4 When the tracks have finished transferring, the status is listed as Complete.

Important Note

Do not disconnect the device while the transfer is in progress.

5 Never unplug the device without first safely disconnecting. To safely disconnect or eject your Samsung Napster Player, do the following:

Windows 2000

Click the "unplug/eject" icon on your Windows taskbar and follow the instructions in the message box that appears.

Windows XP

Click the "Safely Remove Hardware" icon on your Windows taskbar and follow the instructions in the message box that appears.



Windows 2000

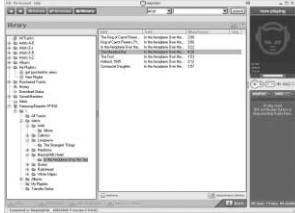


Windows XP

Deleting Music on Your Samsung Napster Player


To remove track(s) from your Samsung/Napster Player:

- 1 Verify that your **Samsung Napster Player** is connected to your computer and displayed in your Napster Library as **Samsung/Napster YH-920**.
- 2 Navigate to and locate the track(s) within the Samsung Napster Player menu tree.



- 3 Select the track(s) and click the **[remove]** button or press the **[Delete]** key on your keyboard.

Getting Help with Napster

Additional help for the Napster application is available by clicking on the  button from any screen, or through the Help drop-down menu.

The following help options are available:

- User Guide: Comprehensive online instructions for using all the Napster features and functions
- FAQs: Answers to frequently asked questions about Napster
- Customer Support: If you require additional assistance using the Napster Software or Napster Services, please contact Customer Support from the Help drop-down menu or send your inquiries to support@napster.com(U.S.) or support@napster.co.uk(U.K).

Using Audible with Your Samsung Napster Player. Welcome to Audible and The Getting Started Guide!

Audible offer a wealth of spoken audio programming – over audiobooks and programs – which you can enjoy immediately. This guide provides instruction for the three key steps to enjoying our digital audio:

- **Browse** the store at audible.com and purchase programs you will love.
- **Manage** your personal online library.
- **Download and listen** at your desktop or transfer your audio to a portable player for enjoyment anywhere.

This guide can be used online as a quick reference or you may print a copy for reference when exploring the audible.com website.

Using Audible with Your Samsung Napster Player.

** Please DO NOT run Napster and Audible softwares simultaneously.*

- 1** Install AudibleManager on your PC. This software can be found on the installation CD that came with your Samsung Napster Player or at www.audible.com/software.
- 2** You will be asked to activate your desktop player (Windows Media Player or Real Player) and your Samsung Napster Player.
- 3** Register for your Free Trial of Audible by visiting www.audible.com/samsung/napster. Browse the collection of over 23,000 audio programs available. Programs include bestselling audiobooks, newspapers, periodicals and radio programs.
- 4** Select the desired titles and proceed through checkout. Select a format and download the audio files to your computer. To begin the download of your Audible audio program, select “Get it Now” from the My Library section of the web site.
- 5** Audible will begin a download of your requested audio program into AudibleManager on your PC. At the end of the download, the audio program will appear in the Inbox window of AudibleManager.
- 6** Transfer the programs to your Samsung Napster Player. The downloaded programs will be listed on the top half of your page. You can highlight your choice and click the Add to Device button. After the transfer is complete, disconnect the mobile device and start listening.

For additional help downloading and listening to Audible audio, go to www.audible.com/helpcenter or call them at 888-283-5051 (US & Canada) or 973-837-2845 (International).

Listen to Audiobooks from Audible.com on your Samsung Napster Player

Step One – Browse and Purchase Content from www.audible.com

- Select items to purchase for your shopping basket. You can purchase individual programs or join an AudibleListener® plan. Listen to our vast selection of audiobooks and subscriptions anytime, anywhere and save an average of more than 60% off our already low digital audio prices.
- Listen to a streaming audio sample of each and every program before you buy.

The screenshot shows the Audible.com homepage. At the top, there are navigation links for SHOP, MY ACCOUNT, MY LIBRARY, MY AUDIBLE, REFER YOUR FRIENDS, and ABOUT AUDIBLE. Below this is a search bar and a navigation menu with options like 'WHAT IS AUDIBLE?', 'WHY AUDIBLE?', 'HOW IT WORKS', 'WHAT I NEED', and 'WAYS TO BUY'. The main content area features a large banner for 'The New York Times' audiobooks, a 'FREE AUDIO' section with a list of titles, and a 'NEW AUDIOBOOKS' section. There are also promotional banners for saving on an Apple iPod and getting a free Otis MP3 player. The bottom of the page includes a 'Not ready to join? Start shopping' link and a footer with contact information.

- Your purchased titles are placed in My Library under the Individual Programs –New or Subscriptions – New tabs.
- Once a title is in your library, you will be able to download and listen to it as often as you like – and your selections will always be there.
- Click “Get it Now” to bring you to the download page where you’ll be able to download and transfer the audio program to your Samsung Napster Player.

The screenshot shows the 'My Library' page on Audible.com. The page is divided into several sections: 'PremiumListener', 'mylibrary' (with tabs for 'All titles', 'Individual Programs', and 'Subscription Programs'), 'SITE DEMO', 'SEARCH', and 'BROWSE CONTENT'. The 'mylibrary' section shows a list of audiobooks with columns for 'Action', 'Title', 'Author', and 'Duration'. Each row has a 'Get it now' button. The 'BROWSE CONTENT' section has a dropdown menu to choose a category.

Action	Title	Author	Duration	Get it now	
<input type="checkbox"/>	090304	That's Not Funny That's Sick	National Lampoon	00:35	Get it now
<input type="checkbox"/>	030104	TexasTalks - Renée Fleming: A Conversation	Renée Fleming and Anthony Tommasini	01:07	Get it now
<input type="checkbox"/>	030104	TexasTalks - Beside Opera	Beverly Sills, Joseph Volpe, and more	01:13	Get it now
<input type="checkbox"/>	030104	TexasTalks - Cabaret: My Favorite Songs	Michael Feinstein, Bobby Short, and more	01:15	Get it now
<input type="checkbox"/>	030104	The Last Airer (Audiobook), Part 2	John Grisham	05:56	Get it now
<input type="checkbox"/>	030004	Franklin and Winston (Audiobook), Part 2	Jan Moucham	06:44	Get it now
<input type="checkbox"/>	012604	Master and Commander (Audiobook), Part 2	Patrick O'Brian	07:37	Get it now
<input type="checkbox"/>	012604	Master and Commander (Audiobook), Part 1	Patrick O'Brian	09:02	Get it now

Step Two – Downloading Your Audible Audio



- There are two action steps from the download screen:

1 Choose a format. Smaller files are represented by lower format numbers; these download faster – especially over a dial-up connection, but have lower fidelity. Larger files are represented by higher format numbers and offer higher fidelity sound. Your Samsung digital audio player can play formats 2, 3 or 4.

2 Download. The audio file will be downloaded from the audible.com website to your PC. You only need to be connected to the Internet while downloading.

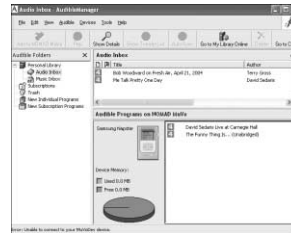
Note

You will need the audible manager® application on your pc to download audible audio programs.

This application is available from your Setup CD that came with your Samsung Napster Player or will automatically load when you begin to download your first Audible audio program.

Step Three – Transferring Audible audio programs from your PC to your Samsung Napster Player using AudibleManager®

- AudibleManager® lets you manage your Audible audio programs locally on your PC and transfer them to your Samsung Napster Player.
- You will be asked to Activate your AudibleManager® and Samsung Napster Player to your Audible.com account once.
- While working within AudibleManager®, you need to be connected to the Internet.



- Follow these steps to transfer audio to your Samsung Napster Player using AudibleManager®:

1 Connect your Samsung Napster Player to your PC via USB port. When connected, the lower window of the AudibleManager program will display the current audio contents of your device.

2 Transfer your audio program to the mobile device by dragging the program from the upper window (Inbox) to the lower window (Device) and dropping it on the list.

3 After the transfer is complete, disconnect your Samsung Napster Player and start listening.

Using Your Samsung Napster Player Playing music

Make sure the device is fully charged and the earphones are connected.

Turning Power On and Off

Power On: Press and hold the ►|| button to turn on the power.

Power Off: Press and hold the ►|| button to turn off the power.

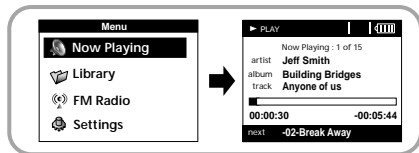
Playing Music

Select Now Playing in the menu.

- Playback starts automatically.

Note

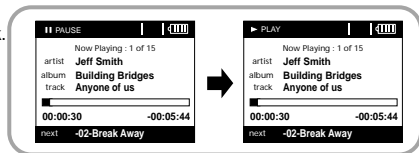
Press and hold the SEL key in Now Playing during file playback to display the current Playlist.



Pausing Music

Press the ►|| button to pause playback.

- While in Pause mode, briefly press ►|| again to resume playback.



Adjusting Volume

Adjusting the Volume

Press the VOLUME UP or DOWN button to adjust the volume.

Note

The volume can be adjusted in increments between 0 and 40.




Hold Feature

Use the Hold feature to lock and disable all buttons. The Hold feature is useful to prevent your Samsung Napster Player from being accidentally turned off or on, or to ensure uninterrupted playback.

Hold Function of the Main Unit

Activate  on the main unit.

- ⦿ All buttons on the main unit will be disabled, and only the buttons on the remote control can be used for input.
- ⦿ When you activate the HOLD switch, a "  " appears on the display.

Hold Function of the Remote Control

Activate  on the remote control.



- ⦿ All buttons on the remote control will be disabled, and only the buttons on the main unit can be used for input.

Note



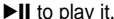
To turn on the power with the remote control while the main unit is in locked mode, press and hold the ►|| button on the remote control.

Searching Within Music Files



Searching for Specific Parts in PLAY Mode

- During playback, press and hold the ,  to forward or reverse search the currently playing file.

Searching for Music Files in PLAY Mode.

- During playback, briefly press the  to play the next track in the playlist.
- Briefly press the  to play the previous track in the playlist.
- Press and hold the SELECT button to display the current playlist.
Use the SCROLL UP/DOWN buttons to find the song you want and press the  to play it.

Searching for Music Files in PAUSE Mode.

- While in pause mode, press the ,  to move to the previous or next track in the playlist and play it automatically.

Note

VBR (Variable Bit Rate) File: An MP3 file that has varying compression ratios.

When playing a VBR file, even if you press  within 5 seconds after the start of playback, the previous song may not be played.

The actual play time and the time displayed on the main unit may differ for VBR files.

Menu Mode

Press the MENU button to switch to MENU mode.

Use the SCROLL UP/SCROLL DOWN buttons to select the menu item you want, and then briefly press the SELECT button.



- **Now Playing:** Display the song currently playing.
- **Library:** Search and select music to play.
- **FM Radio:** Listen to FM radio
- **Settings:** Change the settings.

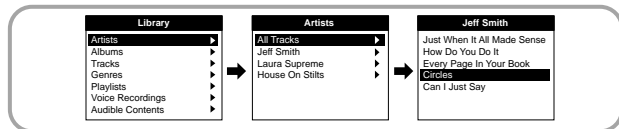
Note

In MENU mode, press the MENU button to exit from the submenu you are in.

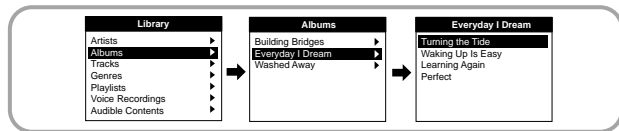
Browsing Your Music

In the MENU, use the SCROLL UP/SCROLL DOWN buttons to select the Library, and press the SELECT button.

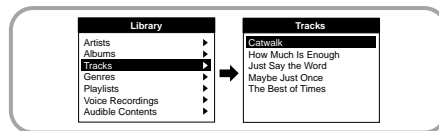
Searching for and Selecting Music Files



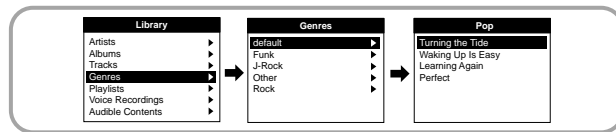
- **Artists:** Shows the artist name from the ID3 tag information stored in the music file.
- Press the ►|| button on the desired artist name.
All song titles corresponding to the artist name will be played.
- If you select an artist's name, song titles that correspond to that artist name will be displayed.
You can use the SCROLL UP/DOWN buttons to move, and then press the SELECT button to play the selected song.



- **Albums:** Shows the album title from the ID3 tag information stored in the music file.
- Press the ►|| button on the desired album name.
All song titles corresponding to the album name will be played.
- If you select an album name, song titles corresponding to that album will be displayed.
You can use the SCROLL UP/DOWN buttons to choose a song, and then press the SELECT button to play the selected song.



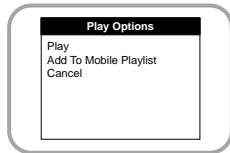
- **Tracks:** Shows the song title from the ID3 tag information stored in the music file.
- You can use the SCROLL UP/DOWN buttons to move, and then press the SELECT button to play the selected song.



- **Genres:** Shows the song genre from the ID3 tag information stored in the music file.
- Press the ►|| button on the desired genre name.
All song titles corresponding to the genre name will be played.
- If you select an genre name, song titles corresponding to that genre will be displayed.
You can use the SCROLL UP/DOWN buttons to choose a song, and then press the SELECT button to play the selected song.

Play Options

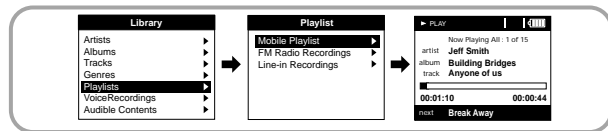
- 1 Select Artist, Album, Track, Genre, and press and hold the SELECT button.
 - Move to Play Options screen.
- 2 In the Play Options, use the SCROLL UP/SCROLL DOWN buttons to select the desired play option, and press the SELECT button.



- **Play** : The selected title will be played.
If you select Play in Artist, Album and Genre, all titles corresponding to Artist, Album and Genre will be played.
- **Add To Mobile Playlist** : The selected title will be added to Mobile Playlist.
If you select Add To Mobile Playlist in Artist, Album and Genre, all titles corresponding to each Artist, Album and Genre will be added to Mobile Playlist.
- **Cancel** : Go back to the previous screen.

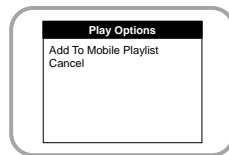
Selecting a Playlist

- 1 In the Library, use the SCROLL UP/SCROLL DOWN buttons to select Playlists, and then press the SELECT button.
- 2 Select the playlist that you want to play, and then press the SELECT button.
 - The selected playlist will be played.



Play Options (Playlists)

- 1 Select a title in the Playlists, and press and hold the SELECT button.
 - Move to Play Options screen.
- 2 In the Play Options, use the SCROLL UP/SCROLL DOWN buttons to select the desired play option, and press the SELECT button.



- **Add To Mobile Playlist** :
The selected title will be moved to Mobile Playlist.
- **Cancel** : Go back to the previous screen.

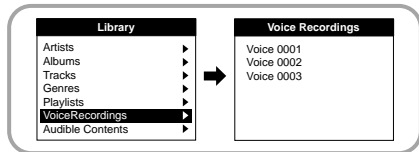
Searching for and Selecting Voice Files

1 In the Library, use the SCROLL UP/SCROLL DOWN buttons to select Voice Recordings, and then press the SELECT button.

- Recorded voice file will appear.

2 Press the ►|| button or SELECT button on the desired file.

- The selected file will be played.

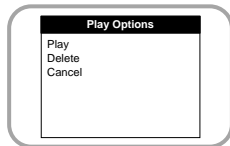


Play Options (Voice Recordings)

1 Select a Voice file in the Voice Recordings, and press and hold the SELECT button.

- Move to Play Options screen.

2 In the Play Options, use the SCROLL UP/SCROLL DOWN buttons to select the desired play option, and press the SELECT button.

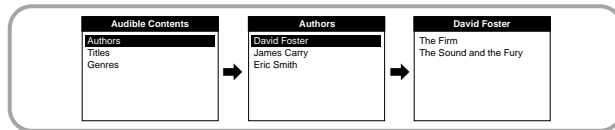


- **Play** : The selected title will be played.
- **Delete** : The selected title will be deleted.
- **Cancel** : Go back to the previous screen.

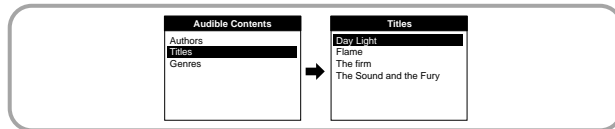
* You can easily search and select the contents downloaded from Audible.

Searching for and Selecting Audible Contents

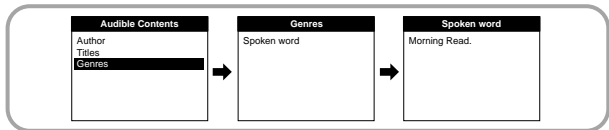
In the Library, use the SCROLL UP/SCROLL DOWN buttons to select Audible Contents, and then press the SELECT button.



- **Authors**: Shows the author name from the information stored in the file.
- Press the ►|| button on the desired author name.
All titles corresponding to the author name will be played.
- If you select an author's name, song titles that correspond to that author name will be displayed.
You can use the SCROLL UP/DOWN buttons to move, and then press the SELECT button to play the selected file.



- **Titles**: Shows the title from the information stored in the file.
- You can use the SCROLL UP/DOWN buttons to move, and then press the SELECT button to play the selected file.



- **Genres:** Shows the genre name from the information stored in the file.
- Press the ►|| button on the desired genre name.
All titles corresponding to the genre name will be played.
- If you select an genre's name, titles that correspond to that genre name will be displayed.
You can use the SCROLL UP/DOWN buttons to more, and then press the SELECT button to play the selected file.

Playing FM Radio

Switching to FM Radio Mode

Press the MENU button.

Select the FM Radio in the main menu and then press the SELECT button.

Note

Pressing the ►|| button will switch between manual tuning mode and preset mode.



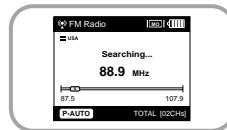
Manually Tuning Stations

Use the ◀◀, ▶▶ button to search for stations and tune the radio.

Automatically Presetting FM Stations

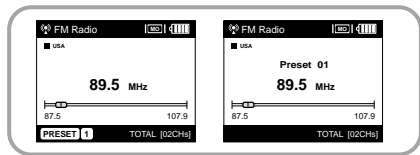
Press and hold the SELECT button in manual tuning mode.

- FM Stations are automatically stored.



Manually Presetting FM Stations

- 1** When you have tuned a station you want to store in memory as a preset, press the SELECT button. The preset number icon will blink.
- 2** Press the SCROLL UP/SCROLL DOWN button to select the preset number to which you want to store the station.
- 3** Press the SELECT button to store the selected station. If you decide not to store the station, press the MENU button again to cancel.

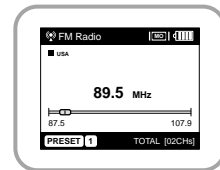


Note

You can preset up to 40 stations.
You can preset a new station into a location that already has a station stored.

Playing Preset FM Stations

- 1** Press the ►|| button so that “PRESET” appears on the display panel.
- 2** Use the ◀◀, ▶▶ to search for the preset station you want to listen to.



Deleting Preset FM Stations

- 1** Press the ►|| button so that “PRESET” appears on the display panel.
- 2** Use the ◀◀, ▶▶ to search for the preset station you want to delete.
- 3** To delete a station, press and hold the SELECT button. The selected station will be deleted and the stations with preset numbers greater than the deleted one will be renumbered accordingly.

Recording From FM Radio

1 Slide the REC switch while listening to FM radio.

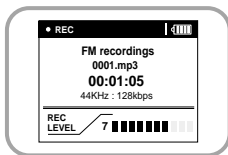
- The current FM broadcast will be recorded into an MP3 file.

2 Slide the REC switch in the opposite direction that you had pushed for recording.

- Recording stops and the file is created.
- Files are recorded and renamed 0001.mp3, 0002.mp3, and so on.
- MP3 files are automatically added to your Library.

Note

You can adjust the actual recording volume (REC LEVEL) using the MENU and SELECT buttons during recording.



Recording Voice

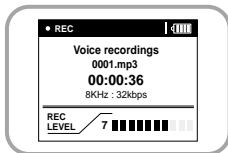
1 Slide the REC switch while to start voice recording.

2 Slide the REC switch in the opposite direction that you had pushed for recording.

- Recording stops and the file is created.
- Files are recorded and renamed 0001.mp3, 0002.mp3, and so on.
- MP3 files are automatically added to your Library.

Note

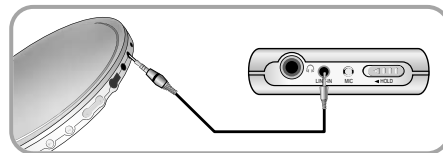
Even if you set the sampling and bit rates higher, voice recording will default to 8khz 32 kbps.



Recording MP3s

Your Samsung Napster Player can be used to record directly from any external audio source such as a CD player, cassette player, home stereo or radio.

1 While in Music mode, use the Line-In cable to connect the main unit's LINE IN jack and the LINE OUT jack of your external audio device.



2 Slide the REC switch to start recording.

3 Slide the REC switch in the opposite direction to stop recording. A new MP3 file will be created.

- Files are recorded and renamed 0001.mp3, 0002.mp3, and so on.
- A recorded MP3 file is automatically added to the current playlist.

Note

Before you begin recording, verify that the battery is fully charged, otherwise your recording may not complete successfully.

If there is no remaining capacity, recording stops automatically.

Once you import the track to Napster, you can edit the track name to your preference.

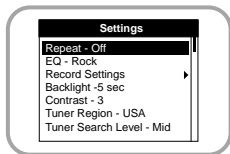
Set the volume of the external audio device to an appropriate level before you start recording.




If the volume level is set too high, the sound quality of the recorded file may be poor.

Additional Features

Shuffle and Repeat Playback

- 1** In the Menu, use the SCROLL UP/SCROLL DOWN buttons to select Settings, and then press the SELECT button.
- 2** Use the SCROLL UP/SCROLL DOWN buttons to select Repeat.
- 3** Press the SELECT button to choose Repeat Off, One, All or Shuffle.
 - Select the desired mode, and then press the MENU button to go to the main menu.

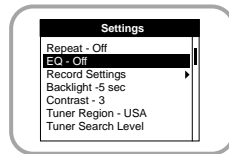


- **Off:** Select this to listen to songs in the current playlist one at a time in the given order.
- **Shuffle:** Select this to play all stored tracks in random order. 
- **Repeat One:** Select this to repeatedly play just one track. 
- **Repeat All:** Select this to repeatedly play all tracks in the current playlist. 

Equalizer Settings

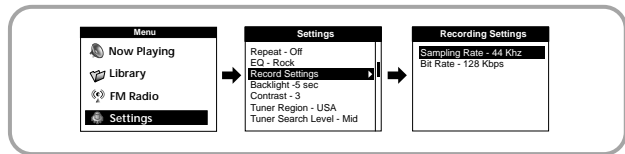
- 1** In the Menu, use the SCROLL UP/SCROLL DOWN buttons to select Settings, and then press the SELECT button.
- 2** Use the SCROLL UP/SCROLL DOWN buttons to select EQ.
- 3** Press the SELECT button until the desired mode appears.
 - Select the desired mode, and then press the MENU button to go to the main menu.

Off → Classical → Jazz → Rock → Pop → Bass Boost



Recording Settings

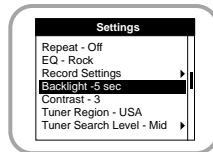
- 1 In the Menu, use the SCROLL UP/SCROLL DOWN buttons to select Settings, and then press the SELECT button.
- 2 Use the SCROLL UP/SCROLL DOWN buttons to select Record Settings, and then press the SELECT button.
- 3 Use the SCROLL UP/SCROLL DOWN buttons to select Sampling Rate and Bit Rate, and then briefly press the SELECT button to make the desired recording setting.
 - Complete the desired setting, and then press the MENU button to go to the main menu.
 - **Sampling Rate:** Each time the SELECT button is pressed, the selection toggles between 32KHz and 44KHz.
 - **Bit Rate:** Each time the SELECT button is pressed, the selection changes as follows: 96 → 128 → 160Kbps.



Screen Settings

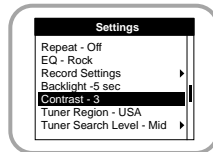
Backlight

- 1 In the Menu, use the SCROLL UP/SCROLL DOWN buttons to select Settings, and then press the SELECT button.
- 2 Use the SCROLL UP/SCROLL DOWN buttons to select Backlight.
- 3 Press the SELECT button until the desired Backlight On-Time appears.
 - Off, 3, 5, 10, 15, 30seconds and Always are available for Backlight-On Time.



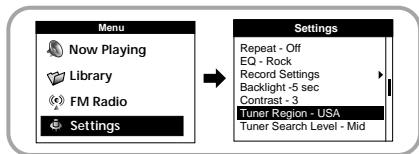
Contrast

- 1 In the Menu, use the SCROLL UP/SCROLL DOWN buttons to select Settings, and then press the SELECT button.
- 2 Use the SCROLL UP/SCROLL DOWN buttons to select Contrast.
- 3 Press the SELECT button until the desired screen contrast appears.
 - The setting range of the contrast, which adjusts the contrast of the screen, is 0 to 6.



Tuner Region Settings

- 1** In the Menu, use the SCROLL UP/SCROLL DOWN buttons to select Settings, and then press the SELECT button.
- 2** Use the SCROLL UP/SCROLL DOWN buttons to select Tuner Region.
- 3** Press the SELECT button until the desired region appears.
 - Select the desired region, and then press the MENU button to go to the main menu.
EUROPE → JAPAN → KOREA → USA → CHINA.



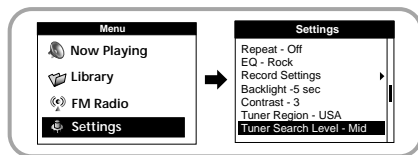
Warning

If you change Tuner Region, all existing PRESET frequencies will be deleted.

Tuner Search Level Settings

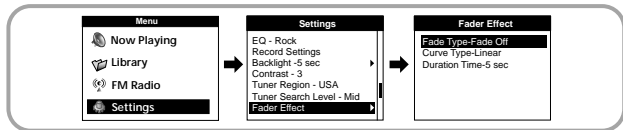
The Tuner Search Level adjusts the FM Receiver sensitivity when searching for radio stations to save as presets.

- 1** In the Menu, use the SCROLL UP/SCROLL DOWN buttons to select Settings, and then press the SELECT button.
- 2** Use the SCROLL UP/SCROLL DOWN buttons to select Tuner Search Level.
- 3** Press the SELECT button until the desired tuner search level appears.
 - Select the desired level, and then press the MENU button to go to the main menu.
Mid → High → Low.



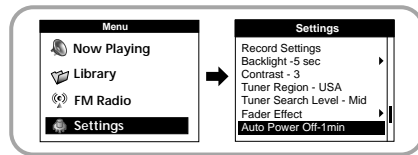
Fader Effect Settings

- 1** In the Menu, use the SCROLL UP/SCROLL DOWN buttons to select Settings, and then press the SELECT button.
- 2** Use the SCROLL UP/SCROLL DOWN buttons to select Fader Effect, and then press the SELECT button.
- 3** Use the SCROLL UP/SCROLL DOWN buttons to select Fader Type, Curve Type, and Duration Time, and then briefly press the SELECT button.
 - Complete the desired setting, and then press the MENU button to go to the main menu.
 - **Fade Type:** Each time the SELECT button is pressed, the selection changes as follows :
 - Fade Off: Music is played back at the volume level you set.
 - Fade In: Volume gradually increases only when playback starts.
 - Fade Out: Volume gradually decreases at the end only.
 - Fade In/Out: Volume gradually increases when playback starts and gradually decreases at the end.
 - **Curve Type:** Each time the SELECT button is pressed, the selection changes as follows :
 - Linear: The speed at which the volume of music increases or decreases is fixed.
 - Express slow: The speed at which the volume of music increases or decreases is slow.
 - Express fast: The speed at which the volume of music increases or decreases is fast.
 - **Duration Time:** Each time the SELECT button is pressed, the selection changes as follows :
3 → 5 → 10 → 15 sec



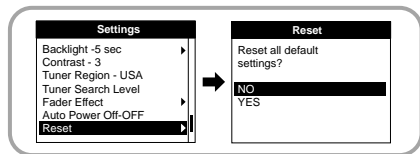
Auto Power Off Settings

- 1** In the Menu, use the SCROLL UP/SCROLL DOWN buttons to select Settings, and then press the SELECT button.
- 2** Use the SCROLL UP/SCROLL DOWN buttons to select Auto Power Off.
- 3** Press the SELECT button until the desired power-off time appears.
 - Select the desired power-off time, and then press the MENU button to go to the main menu.
OFF → 30sec → 1min → 5min → 10min → 15min.



Restoring Default Settings

- 1 In the Menu, use the SCROLL UP/SCROLL DOWN buttons to select Settings, and then press the SELECT button.
- 2 Use the SCROLL UP/SCROLL DOWN buttons to select Reset, and then press the SELECT button.



Volume = 30
Repeat = Off
EQ = Off
Backlight = 5sec
Contrast = 3

Default Settings

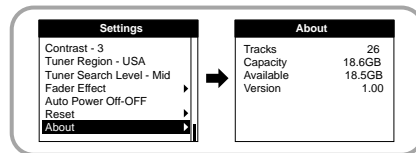
Warning

If you select Reset, all selected settings will be restored to the default setting.

Player Information

About

- 1 In the Menu, use the SCROLL UP/SCROLL DOWN buttons to select Settings, and then press the SELECT button.
- 2 Use the SCROLL UP/SCROLL DOWN buttons to select About, and then press the SELECT button.
 - If you select About, you can check the total number of songs stored, total capacity, available capacity, and version information.



Customer Support

Troubleshooting

A message appears as shown below ;

"The device firmware needs repairs. Please connect to PC and repair firmware with recovery utility. Device will be turned off." or "The device database needs repairs. Please connect to PC and rebuild database with recovery utility. Device will be turned off."

"LOADING LIBRARY" message appears and the device does not operate any more when you turn on the power.

File search does not work properly in Menu Library.

- See page 20.

The player doesn't work. There is nothing showing on the display panel.

- Reset the Player
- Connect the charger.
- Make sure the Hold switch is in the off position.

There is no sound even if I press the Play button in Music mode.

- Check if there are MP3 or WMA files on the Samsung Napster Player.
- Non-playable file formats (e.g. MPEG1 LAYER 1 file) cannot be played.
- Files that have been downloaded without using the Napster client cannot be played.

I cannot download files.

- Check the battery's power level.
- Check if the driver is installed correctly on your PC. Reinstall the software from the installation CD.
- Check the USB connection between the player and your PC.
- Check if there is the "unplug/eject" or "Safely Remove Hardware" icon located in your icon tray at the bottom of your screen.

The backlight does not turn on.

- Check the backlight setting.
- The Samsung Napster Player is designed to turn off the backlight automatically for longer operating time when the battery's residual voltage is low.

The buttons on the Samsung Napster Player do not respond.

- Check if the Hold switch has been activated.
- Check if the USB cable is connected. Buttons do not work if the USB cable is connected.

The playback time display during playback does not seem right.

- Check if you are not playing a VBR (Variable Bit Rate) file. VBR files are only partially supported.

The LCD window is too dark.

- Check the contrast in the Menu.

During playback, some unknown characters are displayed on the display panel.

- Samsung Napster Player supports only English and unsupported languages will be indicated by an asterisk (*).

A "/Noartist/Noalbum" file path appears on the playback screen in place of the selected music file's song title.

- There is no ID3 tag information for the music file. Edit the song title, artist, and album information of the song.

It takes a long time when I search songs by Song Title, Artist, or Album.

- If there are many music files on your player, it may take longer to read them.

I have questions about using Napster.

- See the Napster online User Guide and FAQs for troubleshooting help with Napster.

Specifications

MEMO

Model	Samsung Napster YH-920 Digital Audio Player
Processor	90MIPS RISC
Internal Memory Capacity	20GB
Built-in Rechargeable Battery Capacity	900mAh
Voltage	3.7V (Li-ion Rechargeable Battery)
Playing time	Maximum Operating Time: 9 hours
Dimensions/Weight	61.5 X 106.8 X 16.6mm(2.42" X 4.2" X 0.65")/150g(5.29oz)
Case	Aluminum/Plastic
File Transfer Speed	Max. 120 Mbps USB2.0
Signal to Noise Ratio	90dB with 20KHz LPF (based on 1KHz 0dB)
Earphone Jack Output Power	12mW (16Ω)
Output Frequency Range	20Hz~20KHz
Temperature Range	-5 ~ +35°C (23 ~ 95F)
FM Frequency	87.5 ~ 107.9 MHz
FM Signal to Noise Ratio	45 dB
FM T.H.D	1%
FM Useable Sensitivity	15 dB
File Support	MPEG1/2/2.5 Layer 3 (8Kbps ~ 320Kbps, 8KHz ~ 48 KHz) WMA (48Kbps ~ 192Kbps, 8KHz ~ 48KHz)

Communications Regulation Information

FCC

This device complies with part 15 of the FCC Rules. Operation is subject to the following two conditions: (1) This device may not cause harmful interference, and (2) this device must accept any interference received, including interference that may cause undesired operation.

Caution: Any changes or modifications in construction of this device which are not expressly approved by the party responsible for compliance could void the user's authority to operate the equipment

Note: This equipment has been tested and found to comply with the limits for a Class B digital device, pursuant to part 15 of the FCC Rules. These limits are designed to provide reasonable protection against harmful interference in a residential installation. This equipment generates, uses and can radiate radio frequency energy and, if not installed and used in accordance with the instructions, may cause harmful interference to radio communications. However, there is no guarantee that interference will not occur in a particular installation.

If this equipment does cause harmful interference to radio or television reception, which can be determined by turning the equipment off and on, the user is encouraged to try to correct the interference by one or more of the following measures:

- Reorient or relocate the receiving antenna.
- Increase the separation between the equipment and receiver.
- Connect the equipment to an outlet on a circuit different from that to which the receiver is connected.
- Consult the dealer or an experienced radio/TV technician for help.

Modifications

Any changes or modifications not expressly approved by the grantee of this device could void the user's authority to operate the device.

Compliance

This product conforms to the following Council Directive:

- Directive 89/336/EEC, 92/31/EEC(EMC)

Declaration of Conformity

Name: Samsung Electronics Co., Ltd
Address: 416, Maetan-3Dong, Paldal-Gu, Suwon City, Kyungki-Do, Korea 442-742
declares under its sole responsibility that the product
Trade Name: Samsung Electronics Co., Ltd
Model Number: YH-920
has been tested according to the FCC/CISPR22/95 requirements for Class B devices and found compliant with the following standards

EMI/EMC: AnSI C63.4 1992, FCC Part 15 Subpart B
This device complies with part 15 of the FCC Rules.
Operation is subject to the following two conditions:

1. This device may not cause harmful interference, and
2. This device must accept any interference received, including interference that may cause undesirable operation.

Party Responsible for Product Compliance

Samsung Electronics America
QA Lab.
3351 Michelson Dr. Suite #290
Irvine, CA92612

Warranty

Samsung warrants this product as free of defects in material, design and workmanship for a period of twelve(12) months from the original date of purchase.

If during the period of warranty this product proves defective under normal use and service, you should return the product to the retailer from whom it was originally purchased. The liability of Samsung and its appointed maintenance company is limited to the cost of repair and/or replacement of the unit under warranty. Return of the product for defective reasons should be to the original purchaser; however, Samsung Authorized Dealers and Authorized Service Centers will comply with the warranty on the terms issued to purchasers in the country concerned. For further information relating to the Authorized Service Centers contact; 1-800-SAMSUNG (1-800-726-7864) www.samsungyepp.com

WARRANTY CONDITIONS:

1. The warranty is only valid when the warranty card is properly completed, and upon presentation of the proof of purchase consisting of original invoice or sales slip confirmation, indicating the date of purchase, dealer's name, model, serial No. and product number. Samsung reserves the right to refuse warranty service if this information has been removed or changed after the original purchase of the product from the dealer.
2. Samsung's obligations are to the repair of the defective part, and at its discretion, replacement of the product (service exchange unit).
3. Warranty repairs must be carried out by an Authorized Samsung Dealer/Service Center. No reimbursement will be made for repairs carried out by non Samsung Centers, and warranty coverage will not be valid for any repairs or damage caused by such repairs.
4. Repair or replacement under the terms of this warranty does not give right to extension to or a new starting of the period of warranty. Repair or direct replacement under the terms of this warranty may be fulfilled with functionally equivalent service exchange units.

5. The warranty is not applicable in cases other than defects in material, design and workmanship. The warranty does not cover the following:

- ◆ Periodic checks, maintenance, repair and replacement of parts due to normal wear and tear.
- ◆ Abuse or misuse, including but not solely limited to the failure to use this product for its normal purpose or in accordance with Samsung's instructions usage and maintenance.
- ◆ Use of the product in conjunction with accessories not approved by Samsung for use with this product.
- ◆ Failure of the product arising from incorrect installation or use not consistent with technical or safety standards in current force, or failure to comply with product manual instructions.
- ◆ Accidents, Acts of God or any cause beyond the control of Samsung caused by lightning, water, fire, public disturbances and improper ventilation.

- ◆ Unauthorized modifications carried out for the product to comply with local or national technical standards in countries for which the Samsung product was not originally designed.
 - ◆ Repairs performed by non-authorized service centers such as opening of the product by a non-authorized person.
 - ◆ The model, serial No. and product number on the product has been altered, deleted, removed or made illegible.
6. This warranty does not affect the consumer's statutory rights nor the consumers rights against the dealer from their purchase/sales agreement.

THERE ARE NO EXPRESS WARRANTIES OTHER THAN THOSE LISTED AND DESCRIBED ABOVE, AND NO WARRANTIES WHETHER EXPRESS OR IMPLIED, INCLUDING, BUT NOT LIMITED TO, ANY IMPLIED WARRANTIES OF MERCHANTABILITY OR FITNESS FOR A PARTICULAR PURPOSE, SHALL APPLY AFTER THE EXPRESS WARRANTY PERIODS STATED ABOVE, AND NO OTHER EXPRESS WARRANTY OR GUARANTY GIVEN BY ANY PERSON, FIRM OR CORPORATION WITH RESPECT TO THIS PRODUCT SHALL BE BINDING ON SAMSUNG, SAMSUNG SHALL NOT BE LIABLE FOR LOSS OF REVENUE OR PROFITS, FAILURE TO REALIZE SAVINGS OR OTHER BENEFITS, OR ANY OTHER SPECIAL, INCIDENTAL OR CONSEQUENTIAL DAMAGES CAUSED BY THE USE, MISUSE OR INABILITY TO USE THIS PRODUCT, REGARDLESS OF THE LEGAL THEORY ON WHICH THE CLAIM IS BASED, AND EVEN IF SAMSUNG HAS BEEN ADVISED OF THE POSSIBILITY OF SUCH DAMAGES. NOR SHALL RECOVERY OF ANY KIND AGAINST SAMSUNG BE GREATER IN AMOUNT THAN THE PURCHASE PRICE OF THE PRODUCT SOLD BY SAMSUNG AND CAUSING THE ALLEGED DAMAGE. WITHOUT LIMITING THE FOREGOING, PURCHASER

• ASSUMES ALL RISK AND LIABILITY FOR LOSS,
• DAMAGE OR INJURY TO PURCHASER AND
• PURCHASER'S PROPERTY AND TO OTHERS AND
• THEIR PROPERTY ARISING OUT OF THE USE,
• MISUSE OR INABILITY TO USE THIS PRODUCT SOLD
• BY SAMSUNG NOT CAUSED DIRECTLY BY THE
• NEGLIGENCE OF SAMSUNG. THIS LIMITED
• WARRANTY SHALL NOT EXTEND TO ANYONE
• OTHER THAN THE ORIGINAL PURCHASER OF THIS
• PRODUCT, IS NONTRANSFERABLE AND STATES
• YOUR EXCLUSIVE REMEDY.

• Some states do not allow limitations on how long an
• implied warranty lasts, or the exclusion or limitation
• of incidental or consequential damages, so the
• above limitations or exclusions may not apply to
• you. This warranty gives you specific legal rights,
• and you may also have other rights which vary from
• state to state.
• This product is for personal use only, and is only for
• use in compliance with the limitations of copyright
• and other laws.

To obtain warranty service, please contact
SAMSUNG at:
Samsung Electronics America, Inc.
400 Valley Road, Suite 201 Mount Arlington, NJ
07856
Tel: (973) 601-6000, Fax: (973) 601-6001
1-800-SAMSUNG (1-800-726-7864)
www.samsung.com / www.napster.com
081299

MEMO

MEMO