

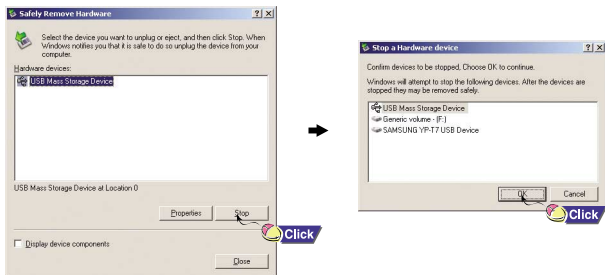
Disconnecting the USB cable

After completing the file transfer, you must disconnect the cable in the following way:

1 Double-click on the green arrow in the taskbar on the bottom right of the window.

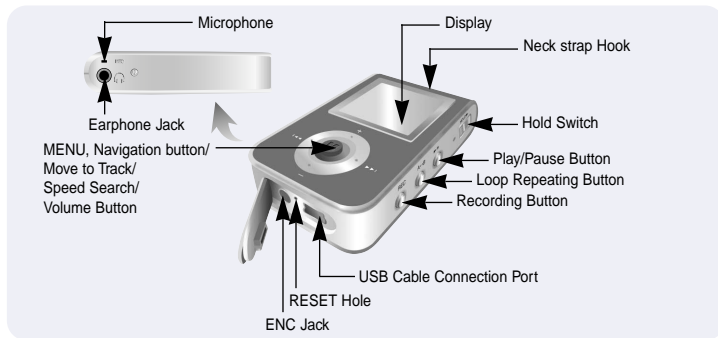


2 When the [Stop a Hardware device] message appears, press the [OK] button and disconnect the USB cable.



YP-T7 Quick Guide

Location of Controls



Turning Power On and Off

- Power On : Press the ►|| button to turn on the power.
- Power Off : Press and hold the ►|| button to turn off the power.

Playing Music (Power On)

Press the ►|| button.

- Playback starts automatically.

Pausing Music (Power Off)

Press the ►|| button to pause playback.

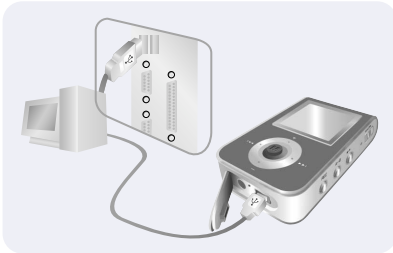
- If no buttons are pressed within 10 seconds (or a custom set Power off time you selected), the unit will automatically shut off.
- While in Pause mode, press the ►|| button again to resume playback.

Connecting the USB cable

- ▶ Before connecting the player to your PC, make sure to install the USB driver.
Insert the Installation CD into the CD-ROM drive and then click [Install Player USB Driver].
Complete the installation by following the instructions in the order as they appear in the windows.

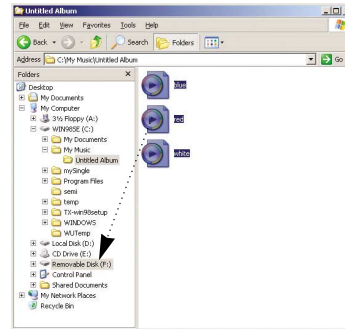
- 1 Connect the USB cable to the USB port on your computer.
- 2 Connect the other end of the USB cable to the USB cable connection port on the bottom of the player.
 - If you disconnect the USB cable from your PC while implementing a command or initializing during USB driver installation, your PC may not function correctly.
- 3 The USB driver is installed with a message saying that it is searching for a new device. You may not see the display screen during installation. Go to the device manager to check that installation has been successfully completed.

- 4 Upon installation of the USB driver "SAMSUNG YP-T7 USB Device" will appear in the [System Properties] → [Device Manager].



Downloading/Uploading files

- 1 Connect the player to your PC with the supplied USB cable.
- 2 Open Windows Explorer on PC.
 - Removable Disc is displayed in Windows Explorer.
- 3 Select the files to save. Drag and drop them into respective folders in the removable disc.
 - Place music files in the removable disc, text files in the TEXT folder, and image files in the IMAGE folder.



! Notice

- Disconnecting the USB cable while downloading or uploading files may cause malfunction of the player.
- The music file order displayed in Windows Explorer may differ from the player order on your player.