

SAMSUNG

YP-U1



MP3, WMA , Audio ASF and Ogg Playback

- The player supports playback of MP3, WMA, Audio ASF and Ogg.

Removable Storage Device

- You can easily copy and paste files to the player using Windows Explorer.

USB 2.0 Support

- Maximum data speed transfer of 18 Mbps.

Voice Recording Function

- You can make high quality voice recordings.

Built-In Rechargeable Li-Polymer Battery

- The built-in rechargeable lithium battery provides up to 13 hours of play time.
(According to company measurement)

Upgradeable Firmware

- You can upgrade the built-in programs when available.
Please check the home page (www.samsung.ca) for upgrades.

Contents

Chapter 1 Preparations

Features	2
Safety Instructions.....	6
Components	8
Location of Controls	9
Display	10
Battery Charger Safety	11

Chapter 2 Connection to Computer

Connecting the player to your PC.....	12
● Installing Software	12
● Connecting the player to PC	14
Manual Installation of the USB Driver	16
● If error occurs during installation of the USB driver	16
● In Windows 98SE	18
Using the removable storage(PC).....	20
● Downloading/Uploading Files	20
● Disconnecting the player	21
● Formatting the Player on your PC	22
Installing Media Studio	23
Using Media Studio.....	25
● Downloading Files	25
● Formatting the Player	27

● Ripping Tracks from an Audio CD.....	28
● Creating a Folder.....	29
● Deleting File	30
To View Help on Media Studio	31

Chapter 3 Using Your Player

Playing Music and turning Off the Device	32
● Turning Power On and Off	32
● Playing Music	32
● Pausing Music.....	32
● Adjusting the Volume	32
Hold Function	33
Recording Voice	33
Searching for Music/Voice Files	34
● To search for specific parts during play.....	34
● To change tracks during play	34
● To change tracks when stopped	34
Loop Repeating.....	35
● Starting Point.....	35
● Ending Point	35
MENU Options	36
Using Navigation.....	37
● Changing Mode	38
● Playing /Exiting Folder	39

Setting Playlist	40
● Setting Playlist	40
● Playing Playlist	40
Setting the Advanced Functions	41
Selecting the Playmode	42
Setting the EQ mode	43
● Preset EQ	43
● User EQ Set	43
Display Settings	44
● Scroll	44
● Display Time	44
● Backlight	45
● Contrast	45
● Tag	45
● Bitrate	45
Language Setting	46
● Menu	46
● ID3-Tag	46
System Settings	47
● Resume	47
● Default vol	47
● Search Speed	47
● Skip Interval	48
● Default set	48
● Beep	48
● About	48
Time Settings	49

● Auto Off Time	49
● Auto Sleep	49
● Intro Time	49
Managing Files	50
● Deleting	50
● Formatting	50
To Upgrade Firmware	51

Chapter 4 Appendix

MENU Table	53
------------------	----

Chapter 5 Customer Support

Troubleshooting	54
Specifications	56

Safety Instructions

Read and understand all the instructions to avoid injury to yourself and damage to the equipment.

Do not expose to extreme temperatures (above 95°F or below 23°F). Do not expose to moisture.



Do not apply excessive pressure on the device.



Do not let any foreign matter spill into the device.



Do not place heavy objects on top of the device.



Be careful not to subject the wearer to excessive pressure when wearing it round your neck.



Do not expose to chemicals such as benzene and thinners.



Do not expose to direct sunlight or heat sources.



Do not store in dusty areas.



Do not try to disassemble and repair the device yourself.



* Please be aware that we claim no responsibility for damage from data loss due to breakdown, repair or other causes.

Earphones

Follow Traffic Safety Instructions

- Do not use the earphones while driving an automobile or riding a bicycle.
It's not only dangerous, but also against the law.
- It may cause an accident if you turn up the volume of the earphones while walking, especially when crossing intersections.

Protect your ears

- Do not turn up the volume too high. Doctors warn against prolonged exposure to high volume.
- Stop using the device or turn the volume down if you have ringing in your ears.
- Take care so that the earphone plug is not caught by your arm or other objects while walking or exercise.

Ambient operating conditions

- Ambient temperature : 5°C ~ 35°C (41°F ~ 95°F)
Humidity : 10 ~ 75%

Environmental Information

- Follow local guidelines for waste disposal when discarding packages, batteries, and old electronic appliances.
- Your player is packaged with cardboard, polyethylene etc., and does not use any unnecessary materials.

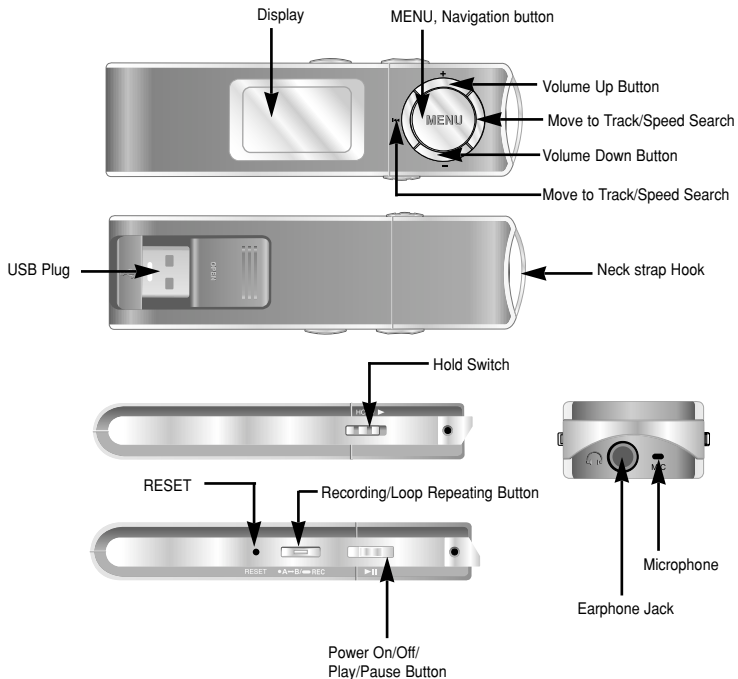
Components



Model	YP-U1 H	YP-U1 V	YP-U1 X	YP-U1 Z	YP-U1 Q
Built-in memory	128MB	256MB	512MB	1GB	2GB

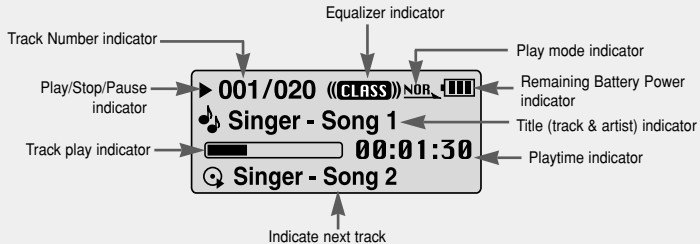
- The capacity of the useable built-in memory is less than indicated as the internal firmware uses a part of the memory as well.
- Design of accessories is subject to change for the purposes of improvement, without notice.

Location of Controls



Location of Controls

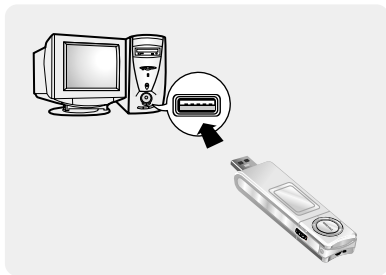
Display



Charging the battery

Connect the USB plug to the USB port on your computer.

- * When recharging is complete, **"Fully Charged"** is shown in the display window.
- * Battery recharge time in normal operation is approximately 2 hours and 30 minutes.



Caution

- When using the rechargeable battery for the first time or after several months of non-use, fully charge it first.
- To avoid the risk of fire, do not charge longer than 12 hours.
- Overcharging will reduce the battery life.
- The rechargeable battery is a consumable item and its capacity will decrease gradually.
- If you connect the player through a USB hub, the connection may be unstable. Please connect the player to the computer directly.

Connecting the player to PC

□ System Requirements.

The PC system must meet the following specifications:

- Pentium 200MHz or greater
- Windows 98 SE/ME/2000/XP
- 40MB of available hard disk space
- CD-ROM drive
- (double speed or greater)
- USB port (2.0) supported
- VGA graphic

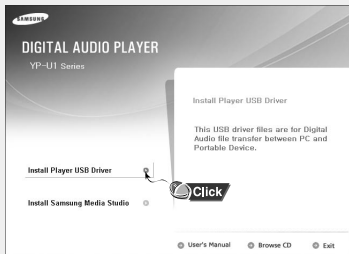
📌 Note

- Install the operating system in Administrator Account (main user) for Windows 2000 or XP. Otherwise, installation will not be completed.
- Windows ME, 2000 and XP can recognize the driver without installing the provided program. However, you must install the program in order to format the player and upgrade firmware.
- If the YP-U1 program has not been installed in Windows 98, then it will not communicate with your removable disc. You must install the USB driver file first.

Before connecting the player to PC, make sure to install USB driver. If **“Add New Hardware Wizard”** appears, press the **[Cancel]** button and install the USB driver.

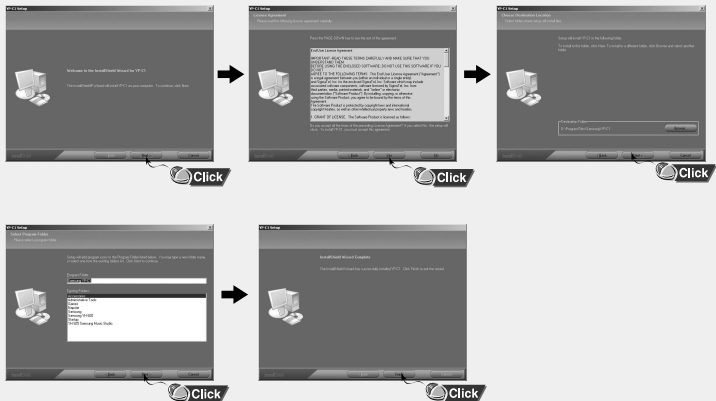
I Installing software

- 1 Insert the Installation CD into the CD-ROM drive.
Select **[Install Player USB Driver]**.



Connecting the player to PC

2 Follow the instructions in the window to complete the installation.



Connecting the player to PC

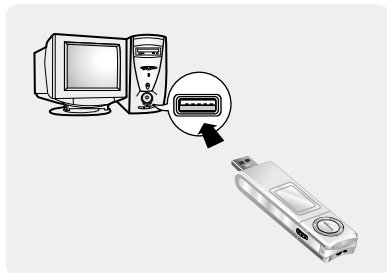
Connecting the player to PC

1 Connect the USB plug to the USB port on the computer.

- If you disconnect the USB plug from your PC while implementing a command or initializing during USB driver installation, your PC may not function correctly.

2 The USB driver is installed with a message saying that it is searching for a new device. You may not see the display screen during installation. Go to the device manager to check that installation has been successfully completed.

3 Upon installation of the USB driver "Samsung YP-U1 USB Device" will appear in the **[System Properties]** → **[Device Manager]**.



How to check if USB driver is properly installed

Windows 98SE/ME:

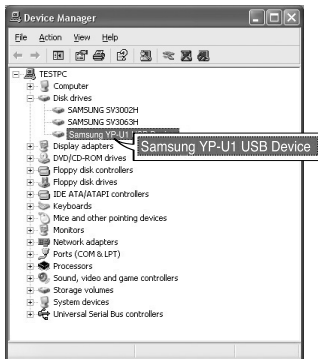
Control Panel → **System** → **Device Manager**
→ **Disk Drives** → **Samsung YP-U1**

Windows 2000:

Control Panel → **System** → **Hardware** →
Device Manager → **Disk Drives** →
Samsung YP-U1 USB Device

Windows XP:

Control Panel → **System** → **Hardware** →
Device Manager → **Universal Serial Bus**
controllers → **Disk Drives** → **Samsung YP-U1**
USB Device



4 When the USB driver is not installed automatically, refer to the next page.

Manual Installation of USB Driver

Go to "Downloading/Uploading files" if the USB driver is installed.
Follow these steps if the USB driver is not installed :

If an error occurs during installation of the USB driver

1 Check the device manager.

Windows 98SE/ME:

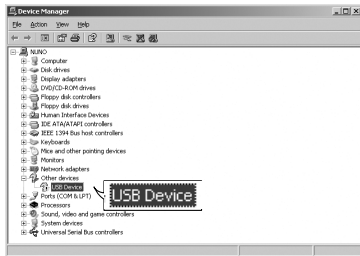
Control Panel → **System** → **Device Manager**

Windows 2000 / XP:

Control Panel → **System** → **Hardware** →
Device Manager

2 Check if there is a device listed with an exclamation point or a question mark (displayed as unknown device or USB device).

3 Double click on the device listed with an exclamation point or a question mark.



Note

- If you are using Windows 2000 and your version of Windows does not recognize the USB driver please download and install the latest service pack from windowsupdate.microsoft.com
- The installation method may vary depending on the type of PC or operating system. Contact your PC dealer or service center for installation information.
- If errors occur continuously when you install the USB driver, reconnect the USB plug after rebooting your system.

Manual Installation of USB Driver

- 4 After selecting the driver, click **[Update Driver]**.



- 5 Click **[Next]**.



- 6 Select **[Search for a suitable driver for my device]** and then click **[Next]**.



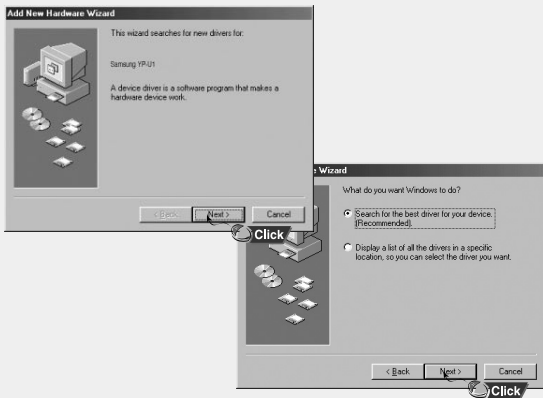
- 7 Click **[Next]** to finish.



Manual Installation of USB Driver

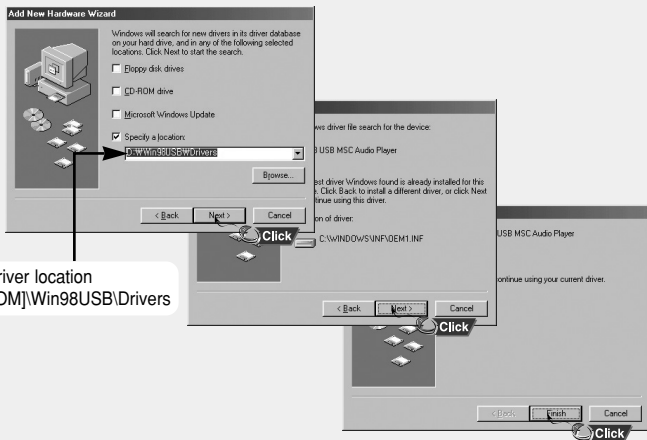
In Windows 98SE

Follow the instructions in the window to complete the installation.



Manual Installation of USB Driver

: You must reboot your computer to complete the installation.



USB driver location
[CD-ROM]Win98USB\Drivers

Note

You cannot use it as a removable disc in Windows 98SE if the YP-U1 program is not installed. Make sure to install the USB driver file first.

Using the removable storage(PC)

When the MP3 player is connected to your PC, the PC will recognize as removable disc. Music and other files can then be dragged and dropped into the removable disc for playback on the MP3 player.

Downloading/Uploading files

1 Connect the player to your PC.

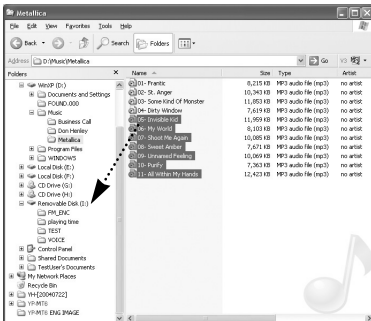
2 Open Windows Explorer on PC.

- Removable Disc is displayed in Windows Explorer.

3 Select the file to save and drag-and-drop it into the removable disk icon.

(In numerical, alphabetical order)

- If you change the name of music files in Windows Explorer like 001* **, 002* * ..., music files will be played in the order of number indicated.



Notice

- The "USB Transferring" message will appear during file download or upload. Disconnecting the USB plug while "USB Transferring" is displayed may cause malfunction of the unit.
- The music file order displayed in Windows Explorer may differ from the play order in your device.

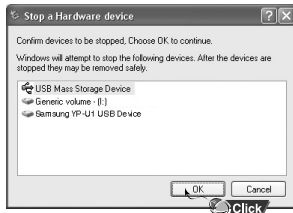
Disconnecting the player

After completing the file transfer, you must disconnect the player in the following way:
If you disconnect the player improperly, the files on the device may be damaged and will not play.

1 Double-click on the green arrow in the taskbar on the bottom right of the window.



2 When the [Stop a Hardware device] message appears, press the [OK] button and disconnect the player.



Note

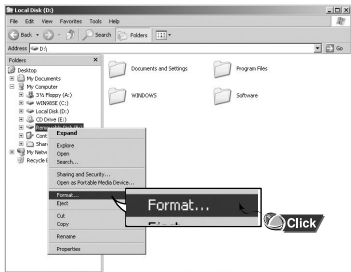
- If you disconnect the player improperly, the files on the device may be damaged and will not play.

Using the removable storage(PC)

Formatting deletes all files on the MP3 player so maximum memory is available for new file storage. It saves you the trouble of deleting unwanted files one at a time.

Formatting the Player on your PC

1 Select the removable disc icon and click the right mouse button to select **[Format]**.



2 Press the **[Start]** button.

- All saved files will be formatted.
- You can change the name of removable disc by selecting **[Volume label]**.



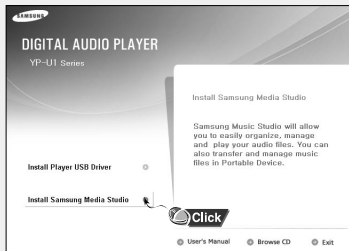
Note

- By formatting, all previously preset menus will be reset, and any pre-existing song or data files will be erased.
- Care must be taken as formatted files can not be recovered.

Installing Media Studio

Media Studio is the program that enables you to download music files to the player, and play back music files on your PC.

- 1 Insert the Installation CD into CD-ROM drive.
Select **[Install Samsung Media Studio]**.

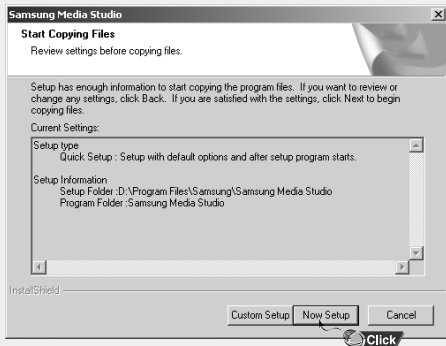


- 2 Select language.



Installing Media Studio

3 Follow the instruction in the window to complete the installation.



- Click Media Studio icon from the Desktop.

Downloading Music Files

1 Connect the player to PC.


- A device connection window will appear on the right side of the screen.
Select [Device] → [Show device Window] at the top of the screen if device connection window does not automatically appear.

2 Select the folder with the file(s) you want to transfer from the [Library] window.

- The music files within the folder appear on the center of the screen.



Using Media Studio

3 When music files appear, select the file(s) you want to transfer, and then press the [Transfer]  button.

- The selected file(s) are transferred to the player.

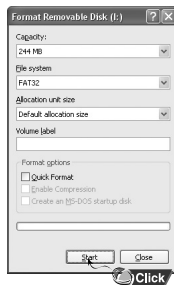
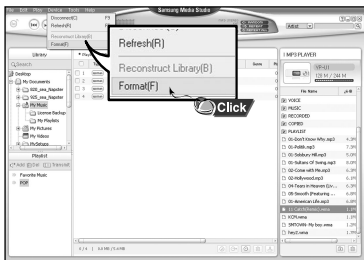


- Refer to **[Help]** for more detailed information.

Formatting deletes all files on the MP3 player so maximum memory is available for new file storage. It saves you the trouble of deleting unwanted files one at a time.

Formatting the Player


- 1 Connect the player to PC.
- 2 Press the [Device] → [Format] at the top of the screen.
- 3 Press the [Start] button when the Format screen appears.
 - The memory of the player is formatted and all the saved files will be deleted.

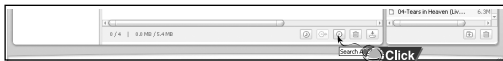



- Refer to **[Help]** for more detailed information

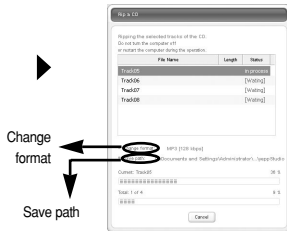
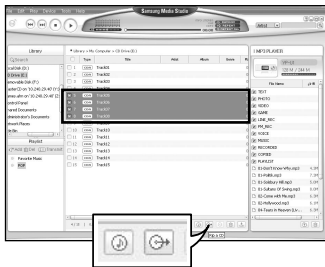
Using Media Studio

Ripping Tracks from an Audio CD

- 1 Insert your CD including tracks to rip into the CD-ROM drive of your PC.
- 2 Press the [Search Audio CD]  button on the lower part of the screen.
 - The tracks on the CD are displayed.




- 3 Select tracks to be ripped and press the [Rip a CD]  button.
 - The selected file is converted into an MP3 file.
 - Select [Tools]→[Audio Source Format Conversion Settings] on the top of the screen to change rip settings.



Note

- Refer to **[Help]** for more detailed information.

I Creating a Folder

- 1 Connect the player to the computer.
- 2 Press the **[Create Folder]**  button at the bottom of device connection window.
- 3 Enter the name of the new folder when an input screen appears.
 - A new folder is created.
 - If you open a new folder and transfer a file, the file is transferred to the newly created folder.




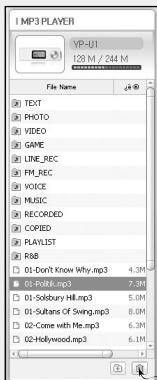
Note

- Refer to **[Help]** for more detailed information.

Using Media Studio

Deleting File

- 1 Connect the player to the computer.
- 2 Press the **[Delete]**  button at the bottom of the connection windows after selecting required files or folders from the device connection windows.
- 3 Press the **[Confirm]** button when an Confirm Deletion screen appears.
 - A selected folder or file is deleted.



Note

- Refer to **[Help]** for more detailed information.



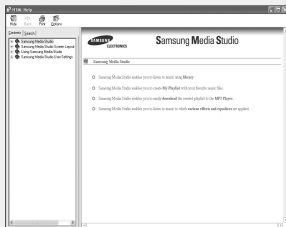
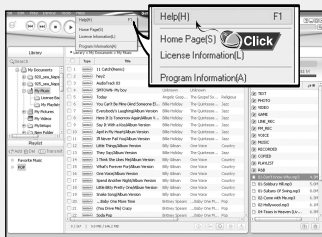
To View Help on Media Studio

Press F1 after starting Media Studio.

● Help will appear.

Click on [Help] at the top of the screen.

● Click on [Help] and the Help window will appear.



Note

- Music recognition technology and related data are provided by Gracenote and Gracenote CDDB® Music Recognition ServiceSM.
- CDDB is a registered trademark of Gracenote. The Gracenote logo and logotype, the Gracenote CDDB logo and logotype, and the "Powered by Gracenote CDDB" logo are trademarks of Gracenote. Music Recognition Service and MRS are service marks of Gracenote.

Playing Music and Turning Off the Device

Make sure the player is fully charged and the earphones are connected.

Turning Power On and Off

Power On : Press the ►|| button to turn on the power.

Power Off : Press and hold the ►|| button to turn off the power.

Playing Music (Power On)

Press the ►|| button.

- Playback starts.

Pausing Music (Power Off)

Press the ►|| button to pause playback.

- If no buttons are pressed within 10 seconds (changes depending on settings), the player automatically powers off.
- While in Pause mode, press the ►|| button again to resume playback.


Adjusting the Volume

Press **-**, **+** to adjust the volume from 00 to 30.

Note

- If the file name is not displayed correctly, move to **[Settings] → [Language] → [ID3-Tag]** and then change the language setting.
- WMA files can only be played as music files with a compression rate of 48Kbps-192Kbps.
- The power off time can be set in the menu.

In Hold mode, all buttons are disabled.

Slide the  switch in the direction of the arrow.

* When the button is pressed, the “ HOLD!” message will appear on the display.

Recording Voice

* **To move to other modes from the Voice mode, refer to “Changing Mode”.**

1 Press and hold the **REC** button to start voice recording.

2 Press the **REC** button again to stop the recording and save the voice file.



Note

- The files are recorded in the order of V001,V002....., and saved as WAV file in the VOICE folder after recording.
- If the Memory is full, Voice Recording is stopped automatically.

Searching for Music/Voice Files

To search for specific parts during play

- Press and hold **⏮, ⏭** during playback to search for the part you want to listen to.
- Release **⏮, ⏭** to resume play normally.

To change tracks during play

- Press **⏭** briefly during playback to play the next track.
- Press **⏮** briefly within 5 seconds after playback starts, to move to and play the previous track. Press **⏮** briefly after five seconds to play the current track from the beginning.

To change tracks when stopped

- Press **⏮, ⏭** in stop mode to move to the previous/next track.

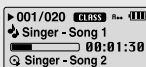
Note

- VBR(Variable Bit Rate) file: A file that constantly changes the compression rate according to the type of sounds, such as their pitch, in the file.
- In the case of a VBR file, you cannot move to and play the previous track even if you press **⏮** within 5 seconds after playback starts.
- Files that were downloaded in MP2 or MP1 and had their file extension changed to MP3 may not play.

Starting Point

While playing music files, press the **A↔B** button briefly at the beginning of the loop you want to set.

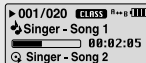
- **A↔** appears in the display.



Ending Point

Press the **A↔B** button briefly again to set the end of the loop.

- **A↔B** appears in the display.
- The loop is played repeatedly.



Press the **A↔B** button briefly to cancel the loop.

Note

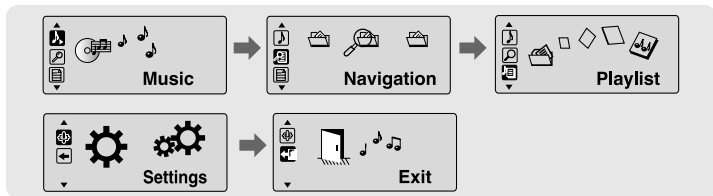
- Loop Repeat is automatically released if you Speed Search with **◀◀◀▶▶▶**.

MENU Options

Press and hold the **MENU** button to switch to **MENU** mode.

Use **←, →** to move and press the **MENU** button briefly to select the menu you want.

Press and hold the **MENU** button to exit the MENU mode.



- Music : To check the file currently playing.
- Navigation : To move to Navigation Mode and browse files and folders
- Playlist : To play back only the files you want
- Settings : To set the functions
- Exit : To exit MENU

Note

- Menu mode will be cancelled if no buttons are pressed within 25 seconds
- Language in the menu screen can be changed in [Settings] → [Language] → [Menu].

You can easily search for files or switch modes using the Navigation function.

1 Press the **MENU** button to enter Navigation mode.
or press and hold the **MENU** button to move to Menu and then select Navigation in Menu.

2 Select the file or folder that you want to play.

- **⏪**: When moving to a higher-level folder.
- **⏩**: When moving to a lower-level folder.
- **⏮**, **⏭**: When moving to a file or folder in the same directory.
- **MENU**: Move to the next folder down. When there is not a lower folder, the selected file will be designated as part of the playlist.

3 Press the **▶||** button.

- The selected file will be played.



Note

- Press and hold the **MENU** button in Navigation mode to exit the Navigation mode.

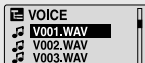
Using Navigation

Changing Mode

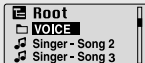
You can change the mode in the following method.

Ex) To change from the Voice mode to the Music mode

1 Press the **MENU** button in the Voice mode.



2 Use **⏪** to move to the upper folder.



3 Use **-**, **+** to move to the music file you want and press the **▶||** button.

- As it is changed to the Music mode, the selected file will be played.




I Playing/Exiting Folder

▶ Playing Folder

1 Press the **MENU** button to move to the Navigation mode.

2 Use **-**, **+** to move to the folder you want and press the **▶||** button.


- When "  " appears, the selected file will be played.



▶ Exiting Folder Play

1 Press the **MENU** button during folder playback to move to the Navigation mode.

2 Use **-**, **+** to move to the file you want and press the **▶||** button.

- After folder play is released, "  " mark will appear and the selected file will be played.




Setting Playlist

Setting Playlist

- Move to the file you want in Navigation mode and press the **MENU** button.
 - The selected file will be marked.
 - To exit the playlist setting, move to the marked file in Navigation mode and press the **MENU** button again.



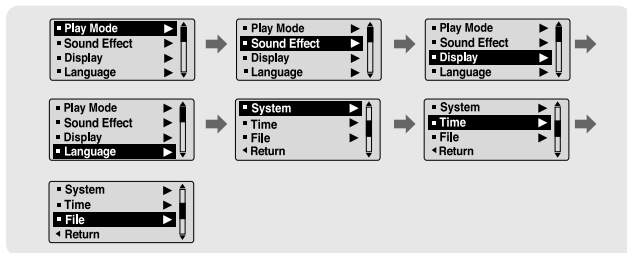
Playing Playlist

- 1 Select Playlist in Menu.
 - The playlist you set will be displayed.
- 2 Move to the file you want to play and press the **▶||** button.
 - “” mark appears and the selected file will be played.



Setting the Advanced Functions

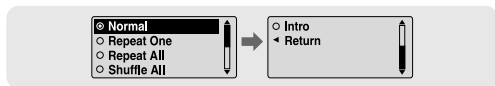
- 1 Select **Settings** in the MENU. (refer to “MENU Options”)
- 2 In Settings, use **-**, **+** to move to the function you want and press the **MENU** button to select.
 - To move to a previous menu, use **⏪** or select Return.



Selecting the Playmode

1 Select **Play Mode** in Settings.

2 In Play mode, use **←**, **→** to move to the mode you want and press the **MENU** button to select.



- Normal : To play all the tracks in order one time.
- Repeat One : To repeat one track.
- Repeat All : To repeat all tracks.
- Shuffle All : To play tracks at random.
- Intro : To listen to the first part of all saved tracks for 10 seconds.
- Return : To move to a previous menu

Select **Sound Effect** in Settings.

Preset EQ

- Use **←**, **→** to move to the sound mode you want and then press the **MENU** button.
- **Normal** → **Classic** → **Jazz** → **Rock** → **User EQ**
- Select User EQ Set to set the EQ as desired.



Bass Booster

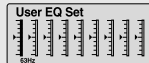
- Use **←**, **→** to select Bass Booster On or Off and then press the **MENU** button.
- Bass Booster function is applied only when you select Normal, Classic, Jazz or Rock in the Preset EQ.
- **On**: When the music is played back, the bass is enhanced in the preset sound.
- **Off**: Music is played back in the preset sound.

Bass Booster



User EQ Set

- If User EQ is selected in Preset EQ, EQ can be set to your preference in the User EQ Set.
- Use **←**, **→** to move to right or left and use **←**, **→** to adjust the level.
Press the **MENU** button after completing the setting.



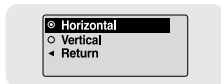
Display Settings

Select **Display** in Settings.

Scroll

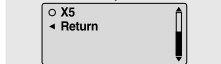
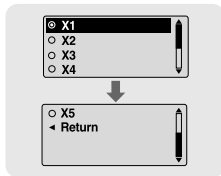
[Type]

- Use **—**, **+** to select the scroll type.
- **Horizontal** : Music title moves horizontally.
- **Vertical** : Music title moves vertically.



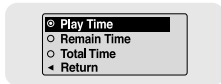
[Speed]

- Use **—**, **+** to set the scroll speed from X1 to X5 to adjust the speed of the track title movement.



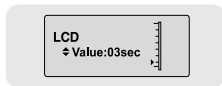
Display Time

- Use **—**, **+** to select the display time.
- **Play Time**: Current playback time is displayed.
- **Remain Time**: Remaining time from total playback time is displayed.
- **Total Time**: Total playback time is displayed.



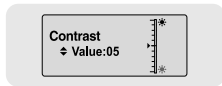
Backlight

- Use **—**, **+** to set the LCD Light-Off time from Off to 60 seconds.
- When set to On, the Light stays on continuously.



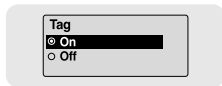
Contrast

- Use **—**, **+** to set the contrast from 0 to 10 to adjust the brightness of the screen.



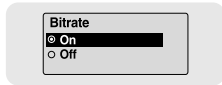
Tag

- Use **—**, **+** to select Tag On or Off.
- **On**: Display the Tag information if the music file has Tag information. Display the file name if the music file has no Tag information.
- **Off**: Display the name of music file.



Bitrate

- Use **—**, **+** to select Bitrate On or Off.
- **On**: Bit rate is displayed at the top of the screen.
- **Off**: The total number of tracks is displayed at the top of the screen.



Language Settings

Select **Language** in Settings.

Menu

- Use **←**, **+** to select the language for displaying menu.
- **Chinese(S)** → **Chinese(T)** → **Dutch** → **English** → **French** → **German** → **Hungarian** → **Italian** → **Japanese** → **Korean** → **Polish** → **Portuguese** → **Russian** → **Spanish** → **Swedish**



ID3-Tag

- Use **←**, **+** to select the language for displaying Tag information.
- **Afrikaans** → **Basque** → **Catalan** → **Chinese(S)** → **Chinese(T)** → **Czech** → **Danish** → **Dutch** → **English** → **Estonian** → **Finnish** → **French** → **German** → **Greek** → **Hrvatski** → **Hungarian** → **Icelandic** → **Italian** → **Japanese** → **Korean** → **Norwegian** → **Polish** → **Portuguese** → **Romany** → **Russian** → **Slovak** → **Slovene** → **Spanish** → **Swedish** → **Turkish** → **Vietnamese** → **Return**



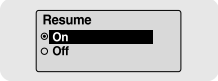
Note

- What is an ID3 Tag ?
This is what is attached to an MP3 to carry information relevant to the file, such as the title, artist, album, year, genre and a comment field.
- Supported languages can be changed or added.

Select **System** in Settings.

Resume

- Use **—**, **+** to select Resume On or Off.
- **On**: Play back music from the part of music you listened last if you play it back again after stopping.
- **Off**: Play back music from the beginning of music if you play it back again after stopping.



Resume
 On
 Off

Default vol

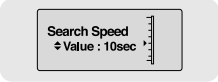
- Use **—**, **+** to set the default volume from 0 to 30(Max).
- If the power is turned on again after having adjusted the volume above the default value, music is played at the default volume.
- If the power is turned on again after the volume was set to within the default value, the music is replayed at the previously played volume.



Default Vol
◀ [Volume Bar] ▶ 28

Search Speed

- Use **—**, **+** to set the Search Speed from 1sec to 1min.
- When you press and hold **⏮** **⏭** to scan a track, you can adjust the scanning speed.



Search Speed
Value : 10sec

Note

- For a VBR or Ogg file, the search speed may not be uniform.

System Settings

Skip Interval

- Use **-**, **+** to set the skip interval from 5sec to 10min.
- If you press **⏮**, **⏭** in music mode, you can search a track by a set time.
- In 1 Track setting, you can move to the previous track or the next track by pressing **⏮**, **⏭**.



Note

- For a VBR or Ogg file, the skip interval may not be uniform.

Skip Interval
Value : 10sec

Default Set

- Use **-**, **+** to select Default Set Yes or No.
- **Yes** : All settings selected will be initialized.
- **No** : All settings selected will remain as they are.

Default Set

Yes
 No

Beep

- Use **-**, **+** to select Beep On or Off.
- **On** : Beep sounds whenever you press the button.
- **Off** : No beep sounds when you press the button.

Beep

On
 Off

About

- If you select About, you can check version information, total number of tracks and remaining capacity.

Ver. 1.000
010 Tracks
051MB Free

Select Time in Settings.

Auto Off Time

- Use **—**, **+** to set the Power-Off time from 0 to 3 minutes.
- If no button is pressed after play stops, the player will automatically turn off after the time you set.
- When set to Off, it will not turn off automatically.



Auto Off Time
Value: 05sec

Auto Sleep


- Use **—**, **+** to set the Sleep time from 10 to 120 minutes.
- The player will automatically turn off after the time you set.
- When set to Off, it does not turn off automatically.



Auto Sleep
Value: 10min

Intro Time

- Use **—**, **+** to set the Intro time to 10, 20, 30, or 60 seconds.
- When you select the Intro function, the beginning of all files will be played back for the seconds you set.



Intro Time
Value: 10sec

Managing Files

Select **File** in Settings.

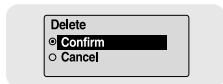
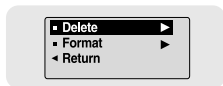
Deleting

1 Select **Delete** in File.

2 Use **←**, **→** to move to the file you want to delete and then press the **MENU** button.

3 Use **←**, **→** to move to Confirm and then press the **MENU** button.

- The selected file will be deleted.

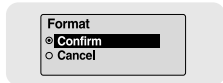
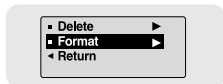


Formatting

1 Select **Format** in File.

2 Use **←**, **→** to move to Confirm and then press the **MENU** button.

- The player will be formatted.



Note

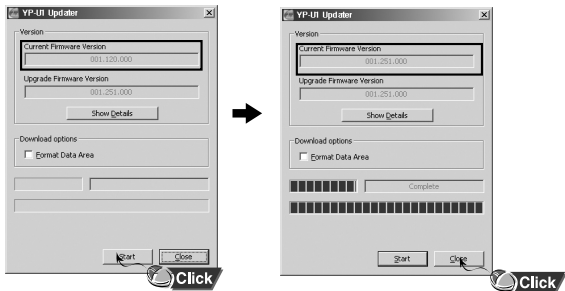
- All files will be deleted when formatting the built-in memory.

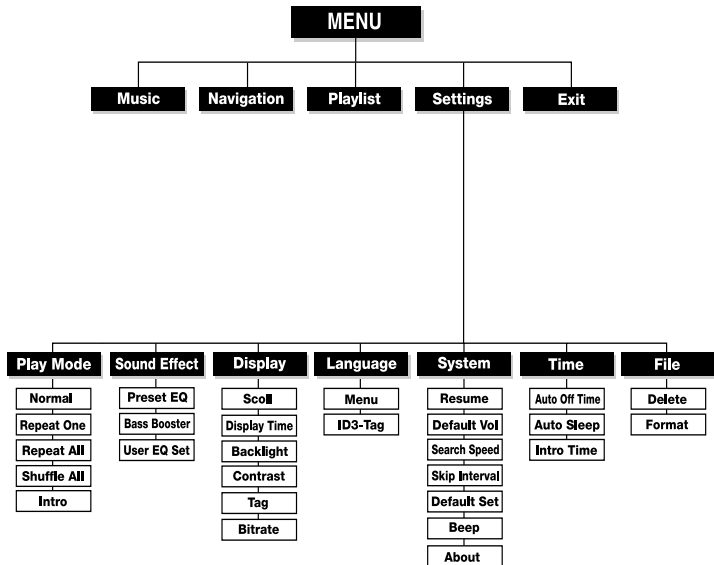
To Upgrade Firmware |

- 1** Connect to <http://www.samsung.ca> select [SUPPORT] → [DOWNLOAD CENTER] and then select your product.
- 2** When the product page appears, select [Firmware] below the model name to download the latest firmware.
- 3** Uncompress the downloaded file in a folder.
- 4** Run Setup.exe and follow the instructions on the screen for installation.
 - If previous version of firmware updater has been installed on your PC, overwrite the firmware files (bootmanager.sb,resource.bin,StmpSys.sb,UsbMsc.sb) in "C:\Program Files\Samsung\YP-U1" folder.
- 5** Double-click YP-U1 Updater icon on the Desktop.
 - Select [Install Player USB Driver] that appears when you insert the Installation CD into the CD-ROM drive. When the driver is installed, YP-U1 Updater icon is created on the Desktop.

To Upgrade Firmware

- 6 Connect the YP-U1 to your PC.
- 7 Check the current version and click the [Start] button of the Firmware Updater program to upgrade the Firmware.
 - If you select "Format data area" and start the update, all the data saved in YP-U1 will be deleted. Please backup your important data on your PC.
If you do not want your data to be deleted, do not select "Format data area".
- 8 Confirm the version of the current firmware.
- 9 Click the [Close] button.





- Use the **MENU** button to move and select.

Troubleshooting

The software doesn't work

- Refer to the System Requirements
-

The player does not work and the LCD displays nothing.

- Check the battery charge status of the player.
 - Connect the player to PC and run YP-U1 Updater in the desktop to update the player.
 - Reset the player by pressing the RESET Hole using a pointed object such as a safety clip.
-

In PLAY mode, music is not played after pressing the ►|| button

- Check to see if MP3 or WMA files are saved in the built-in memory.
 - Check to see if the HOLD button is locked.
-

Files cannot be downloaded.

- Check to see if the driver is installed correctly in the computer.
 - Check the connection between the player and PC.
 - Operating system limits the number of files you can save.
Please save your music files by creating a subfolder.
 - Check if the memory is full.
-

Backlight does not work.

- Check the backlight setup.
 - When the battery power is low, the backlight will go out.
-

The buttons do not work.

- Reset the player by pressing the RESET Hole using a pointed object such as a safety clip.

The player keeps being turned off.

- In Stop mode, the power is automatically turned off after ten seconds (changes depending on settings).
- Check to see if there are files saved in it.

Something's wrong with play time displayed during Play mode.

- Check to see if a VBR file is playing.

LCD window is dark

- Check the Contrast setting.

The file name is not displayed correctly.

- Move to [Settings] → [Language] → [ID3-Tag] in the Menu and then change the language setting.

There is a file saved in the player, but "No File" appears in the screen.

- After checking whether the folder is played, use the Navigation function to change the folder.
- After connecting it to PC, execute YP-U1 Updater in the desktop to update the product.

I cannot properly connect it to PC.

- Win98SE : Try to connect again after installing the driver.
- WinME : Remove the driver program and then select the Start and then Windows Update on the Desktop. After selecting important update and service pack, execute update all.
- Win2000/XP : Try to connect it again after rebooting the computer.

Specifications

Model	YP-U1
Built-in Memory capacity	128MB(YP-U1 H), 256MB(YP-U1 V), 512MB(YP-U1 X), 1GB(YP-U1 Z), 2GB(YP-U1 Q)
Voltage	3.7V (Li-polymer)
Playing time	lasts up to 13hours(On the basis of measurement by the company)
Dimensions/Weight	25.6 X 87.4 X 13.6 mm / 33 g
Case	Plastic
Noise Ratio	88dB with 20kHz LPF
Earphones Jack Output Power	18mW/CH (16Ω)
Output Frequency Range	20Hz~20kHz
Operating Temperature Range	-5 ~ +35°C(23~95°F)
File Support	MPEG1/2/2.5 Layer3(8Kbps ~ 320Kbps, 8KHz ~ 48KHz) WMA, Audio ASF (48Kbps ~ 192Kbps, 8KHz ~ 48KHz), Ogg(Q0~Q9)

The product unit accompanying this user manual is licensed under certain intellectual property rights of certain third parties. This license is limited to private non-commercial use by end-user consumers for licensed contents. No rights are granted for commercial use. The license does not cover any product unit other than this product unit and the license does not extend to any unlicensed product unit or process conforming to ISO/IEC 11172-3 or ISO/IEC 13818-3 used or sold in combination with this product unit. The license only covers the use of this product unit to encode and/or decode audio files conforming to the ISO/IEC 11172-3 or ISO/IEC 13818-3. No rights are granted under this license for product features or functions that do not conform to the ISO/IEC 11172-3 or ISO/IEC 13818-3.

The Samsung logo is located in the top left corner, featuring the word "SAMSUNG" in white capital letters inside a black oval shape.

ELECTRONICS

Samsung Limited Warranty

Samsung Electronics Canada Inc. (SECA),

warrants that this product is free from defective material and workmanship.

SECA further warrants that if this product fails to operate properly within the specified warranty period and the failure is due to improper workmanship or defective material SECA will repair or replace the product at its option.

All warranty repairs must be performed by a SECA authorized service centre.

(The name and address of the location nearest you can be obtained by calling toll free **1-800-726-7864** or visiting our web site at **www.samsung.ca**)

Labour

one (1) year (carry-in)

Parts

one (1) year

On carry-in models, transportation to and from the service centre is the customer's responsibility.

The original dated sales receipt must be retained by the customer and is the only acceptable proof of purchase. It must be presented to the authorized service centre at the time service is requested.

Exclusions

This warranty does not cover damage due to accident, fire flood and/or other acts of God; misuse, incorrect line voltage, improper installation, improper or unauthorized repairs, commercial use, or damage that occurs in shipping. Exterior and interior finish, lamps and glass are not covered under this warranty. Customer adjustments which are explained in the instruction manual are not covered under the terms of this warranty. This warranty will automatically be voided for any unit found with a missing or altered serial number. This warranty is valid only on products purchased and used in Canada.

The Samsung logo, consisting of the word "SAMSUNG" in a bold, sans-serif font, is enclosed within a white, horizontally-oriented oval shape. The background of the entire page is a solid, vibrant yellow.

SAMSUNG ELECTRONCS CANADA, INC. and HEADQUARTERS

55 Standish Court, Mississauga, Ontario, Canada L5R 4B2

TEL: 1-905-542-3535

www.samsung.ca and SERVICE DIVISION

55 Standish Court, Mississauga, Ontario, Canada L5R 4B2

1-800-SAMSUNG (1-800-726-7864)

YP-U1